

TOOL & EQUIPMENT MAINTENANCE GUIDE



TOOL NUMBER: TSN00787-300-B

TITLE: COOLANT EVAC & FILL KIT

REV, DATE: A, 3-27-24

TOOL FUNCTION:

Drain and fill coolant systems in Rivian vehicles.

REFERENCE LINKS:

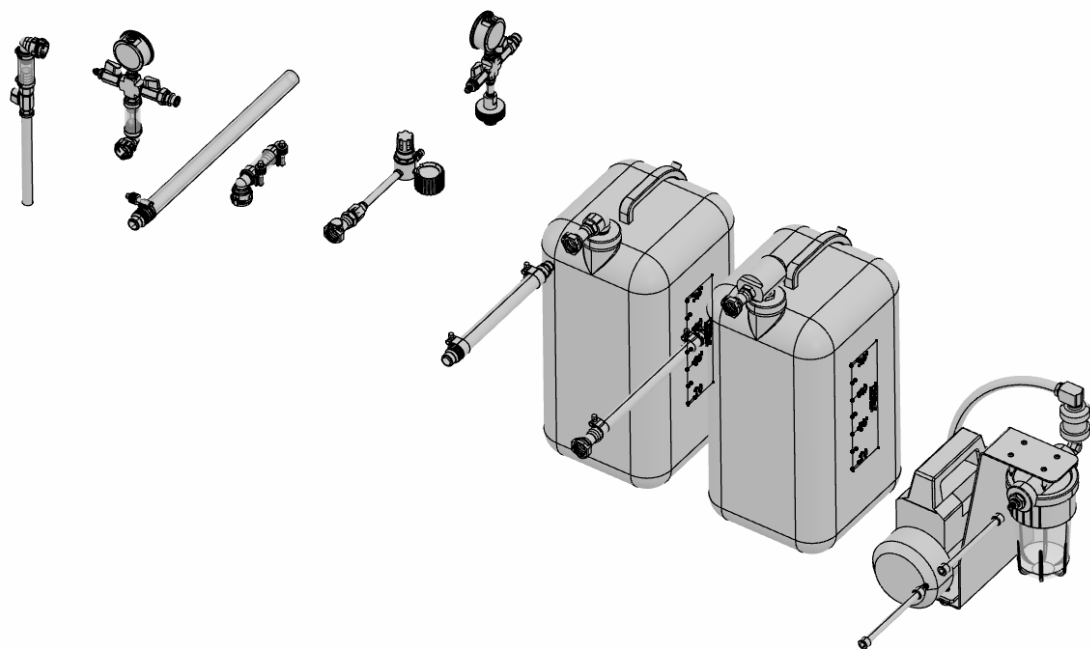
[Tool Usage Instruction](#)

CONTENTS:

[MAINTENANCE SCHEDULE & CHECKLIST](#)

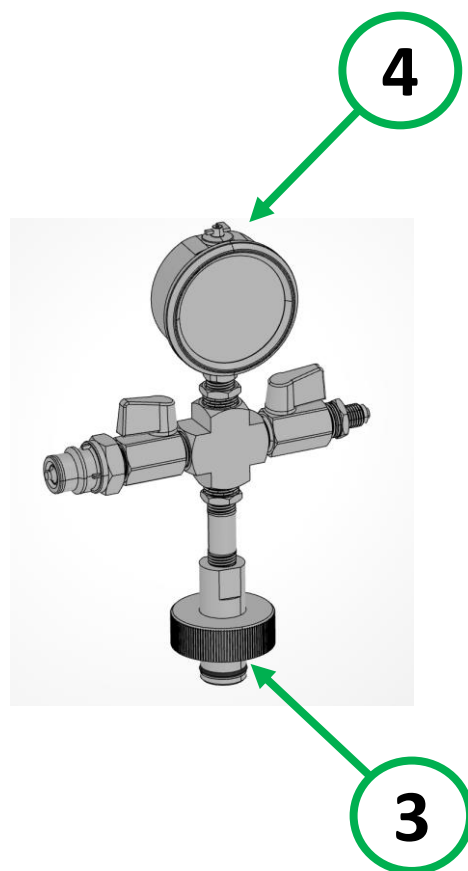
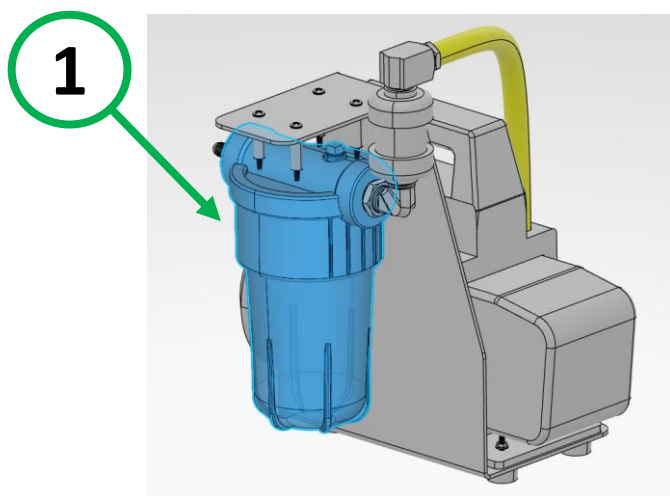
[MAINTENANCE INSTRUCTIONS](#)

[COMMON REPLACEMENT PARTS](#)



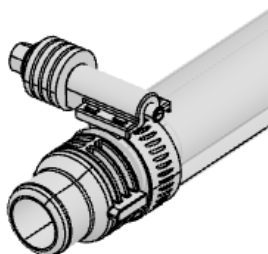
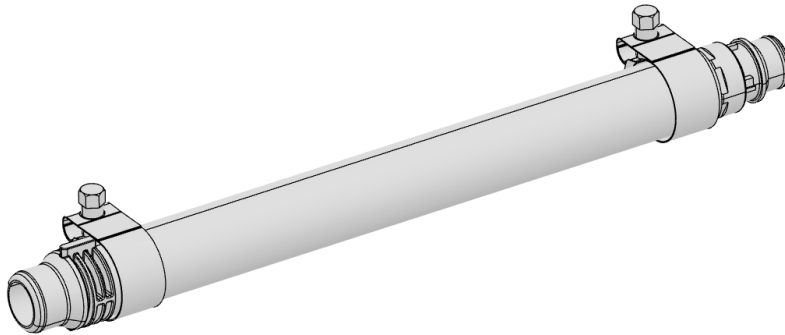
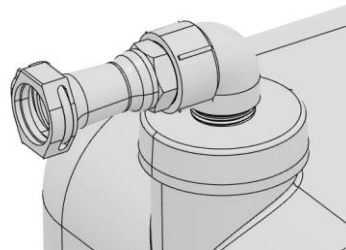
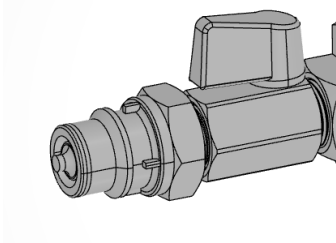
MAINTENANCE CHECKLIST

ITEM	DESCRIPTION	INSPECT	REPLACE
1	FILTER/CATCH BOWL	BEFORE EVERY USE	N/A
2	VACUUM PUMP OIL	MONTHLY	AS REQUIRED
3	DRAIN CAP O-RING	QUARTERLY	AS REQUIRED
4	DRAIN AND FILL CAP GAUGE	QUARTERLY	AS REQUIRED
5	FITTINGS, HOSE CONNECTORS, ETC.	QUARTERLY	AS REQUIRED



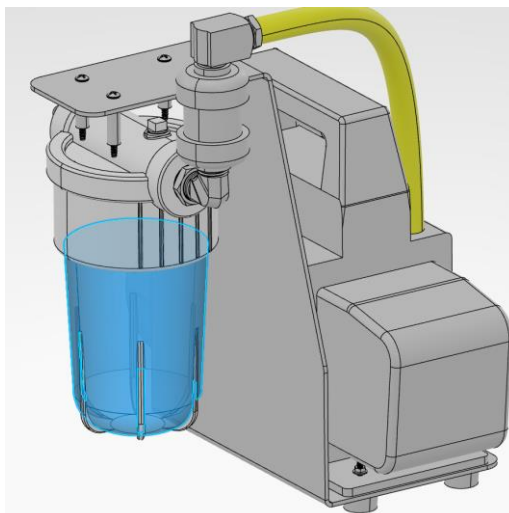
5

Examples shown below, inspect all items



MAINTENANCE INSTRUCTION

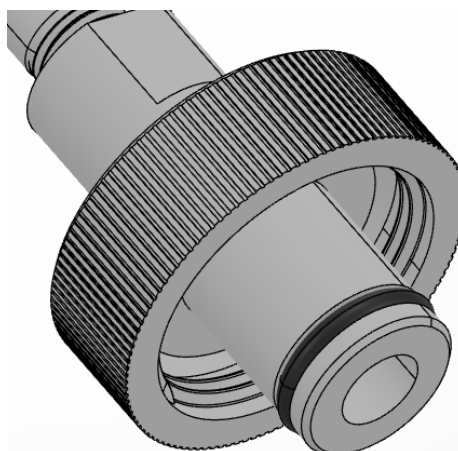
1. Unscrew the filter housing and empty the container before every use.



2. Inspect the vacuum pump oil through the sight glass.
 - If the oil looks contaminated, drain and relace it.
 - Add oil if the level is low.

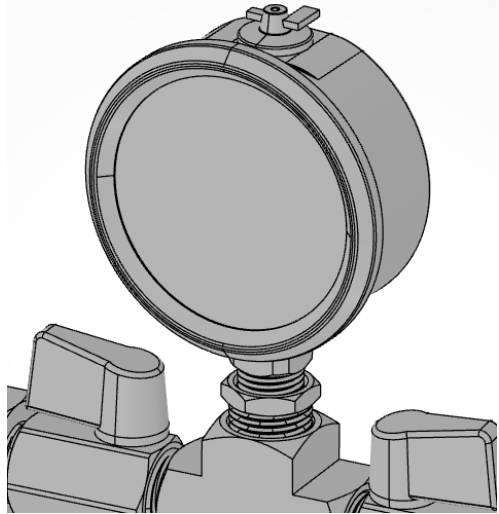


3. Inspect the O-RING on the drain and fill cap assembly for tears, breaks etc.

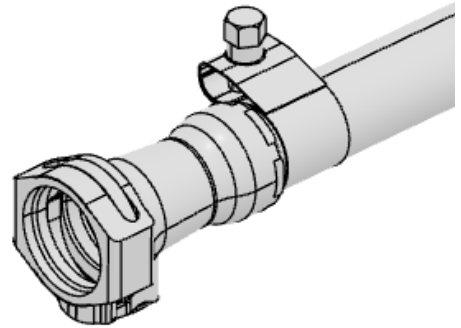


MAINTENANCE INSTRUCTION

4. Inspect the gauge on the drain and fill cap assembly.



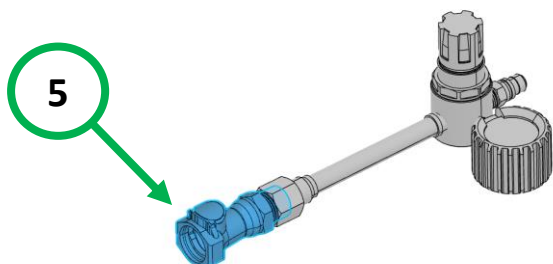
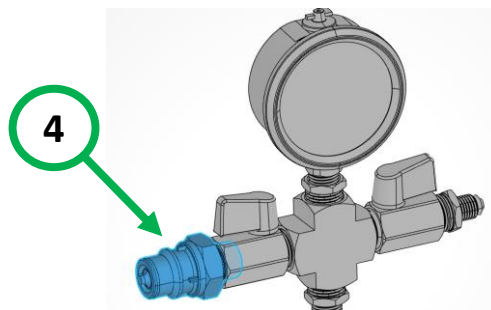
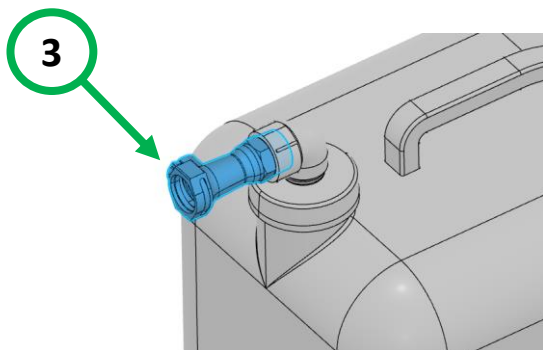
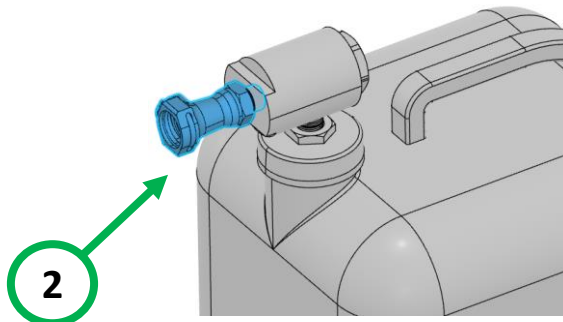
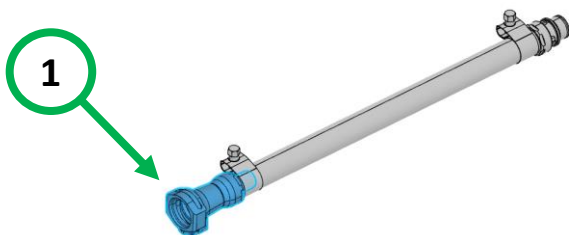
5. Inspect all hoses and fittings. Tighten any loose connections , or order replacement fittings as required. .



COMMON REPLACEMENT PARTS

FOR OTHER ITEMS NOT SHOWN, CONTACT RIVIAN SERVICE TOOL ENGINEERING

ITEM	DESCRIPTION	ORDER INFO:
1	QD, Fill hose	MCMaster 51545K34
2	QD, Fill jug	MCMaster 51545K31
3	QD, Drain jug	MCMaster 5012K897
4	QD, Drain and fill cap Assy	MCMaster 51545K51
5	QD, Regulated air hose	MCMaster 51545K87
6	Gauge, Drain and fill cap Assy	MCMaster 38465K43
7	O-ring, Drain and fill cap Assy	MCMaster 9263K725
8	Vacuum oil	Robinair 13119 or Equivalent



COMMON REPLACEMENT PARTS

FOR OTHER ITEMS NOT SHOWN, CONTACT RIVIAN SERVICE TOOL ENGINEERING

