



3 TON BIG WHEEL OFF ROAD ALUMINIUM JACK

CT6692



ORIGINAL MANUAL

Please read the entire instruction manual before using the product and then save it for future reference.

Cannon Tools Limited

Address: 20 Station Road, Rowley Regis, West Midlands, B65 0JU.U.K.

EC DECLARATION OF CONFORMITY

We CANNON TOOLS LTD

20 Station road, Rowley Regis, West Midlands, B65 0JU.U.K.

Declare that the following machine complies with the appropriate basic safety and health requirements of the EC Directive based on its design and type, as brought into circulation by us.

In case of alteration of the machine, not agreed upon by us, this declaration will lose its validity.

Product description: 3 TON BIG WHEEL OFF ROAD ALUMINIUM JACK

Model: CT6692

Applicable EC Directives:

EC Machinery Directive 2006/42/EC

Harmonized standards

EN 1494:2000+A1:2008

20 Station Road, Rowley Regis, West Midlands, B65 0JU.U.K.

Mr. Gurcharan Tony Singh Sanghera

Managing Director

CANNON TOOLS LTD



2024-08-22

1. SPECIFICATIONS

Min height: 165mm

Lifting stroke: 536mm (without Load)

Max height: 730mm (with extension)

Rated load: 3 Ton

2. GENERAL SAFETY INSTRUCTIONS

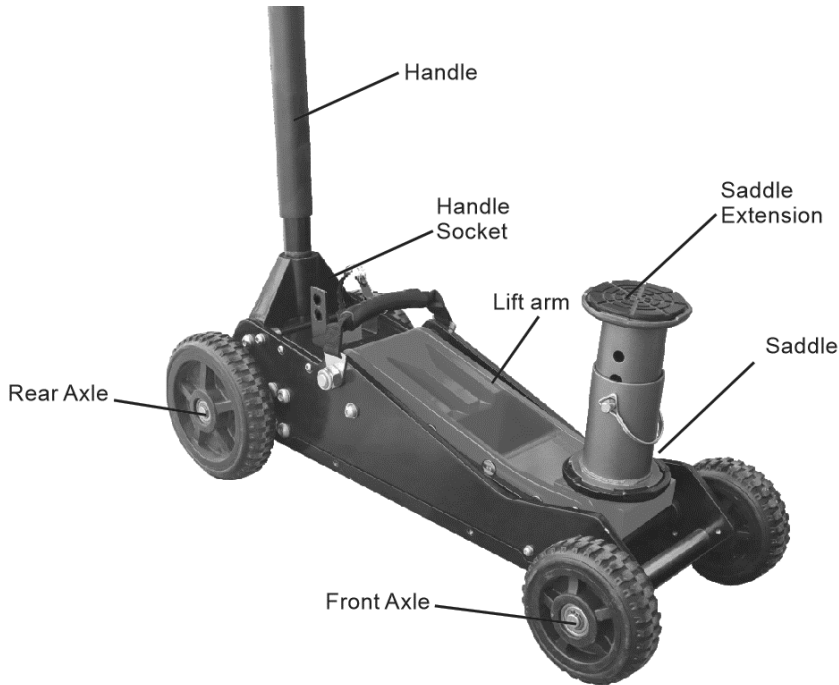
The owner and operator shall have an understanding of these jack stands and safe operating procedures before attempting to use. The owner and operator shall be aware that use of this product may require special skills and knowledge. Instructions and safety information shall be conveyed in the operator's native language before use of these stands are authorized. Make certain that the operator thoroughly understands the inherent dangers associated with the use and misuse of the product. If any doubt exists as to the safe and proper use of the jack stands, remove from services immediately. Inspect before each use. Do not use if there are broken, bent, cracked or damaged parts (including labels). Any jack stand that appears damaged in any way, or operates abnormally shall be removed from service immediately. If the jack stand has been or is suspected to have been subjected to a shock load (a load dropped suddenly, unexpectedly upon it) immediately discontinue use until jack stand has been inspected. It is recommended that an annual inspection be done by qualified personnel. Labels and Operator Manuals are available from manufacturer.

1. Study, understand, and follow all instructions before operating this device.
2. Do not exceed rated capacity.
3. Use only on a hard, level surface capable of supporting the load.
4. Support the vehicle with appropriate means immediately after lifting.
5. Failure to heed these markings may result in personal injury and/or property damage.
6. Lift only on areas of the vehicle as specified by the vehicle manufacturer.
7. No alterations shall be made to this product.
8. Only attachments and/or adapters supplied by the manufacturer shall be used.
9. Do not move or dolly the vehicle while on the jack.
10. Never work on, under or around a load supported only by this device.
11. Do not adjust safety valve.
12. Wear ANSI-approved safety goggles and heavy-duty work gloves during use.
13. Keep clear of load while lifting and lowering.
14. Lower load slowly.
15. Apply parking brake and chock tires before lifting vehicle.
16. Inspect before every use; do not use if parts are loose or damaged.
17. Do not use for aircraft purposes.
18. The warnings, precautions, and instructions discussed in this manual cannot cover all possible conditions and situations that may occur. The operator must understand that common sense and caution are factors, which cannot be built into this product, but must be supplied by

the operator.

19. The Handle Socket will be held down by a plastic block under tension. Wear ANSI approved safety goggles before freeing Handle Socket. Hold Handle Socket down while removing block. After removal, carefully swing Handle Socket up until tension is released.

3. DESCRIPTION



4. ASSEMBLY

1. The jack handle is shipped in the box in two pieces and easily snaps together.
2. The extension is shipped clamped onto the extension bracket. If you want the bracket ON the jack then there is a spot provided just in front of the handle. There is a hole in that plate with a nut attached on the bottom side. Thread the bolt we provide, through the mount and tighten it down. Then you can store the extension on the jack when not in use.
3. The extension "keys" into the jack plate with opposing tabs like a gear set. Line up the tabs on the extension with the opposing tabs of the jack plate so that the extension sits flat on the jack plate. Then give it a 1/4 turn and the extension tabs will line up UNDER the tabs on the jack pad. (NOTE if these tabs become bent then the extension will no longer fit correctly. If you are using the jack without the extension then remove the rubber pad from the extension and put it on the jack plate. This will help to keep the tabs from bending or breaking.

5. INSPECT THE JACK BEFORE USING

1. In shipping there is a possibility that air has gotten into the system. Before using your jack, open the valve by turning the handle counterclockwise as if you were lowering the jack. Pump the jack with the valve open 10-12 times. This will pressurize the system, pushing out any trapped air.
2. It is possible that your jack is not full of hydraulic fluid. If you did everything above and it still doesn't seem to work correctly, remove the marked cap on the hydraulic pump and check the fluid. With the jack all the way down, the fluid level should come up to the bottom of the threads.
3. Check over the jack and make sure visually everything looks good. We take pride in our products and every piece is inspected to make sure that it is in good working order but stuff happens and we would rather you find a loose bolt now than have it rattle out in the middle of nowhere. If mounting this on a race vehicle, or anything that will see lots of abuse we recommend adding some thread locker to the bolts.

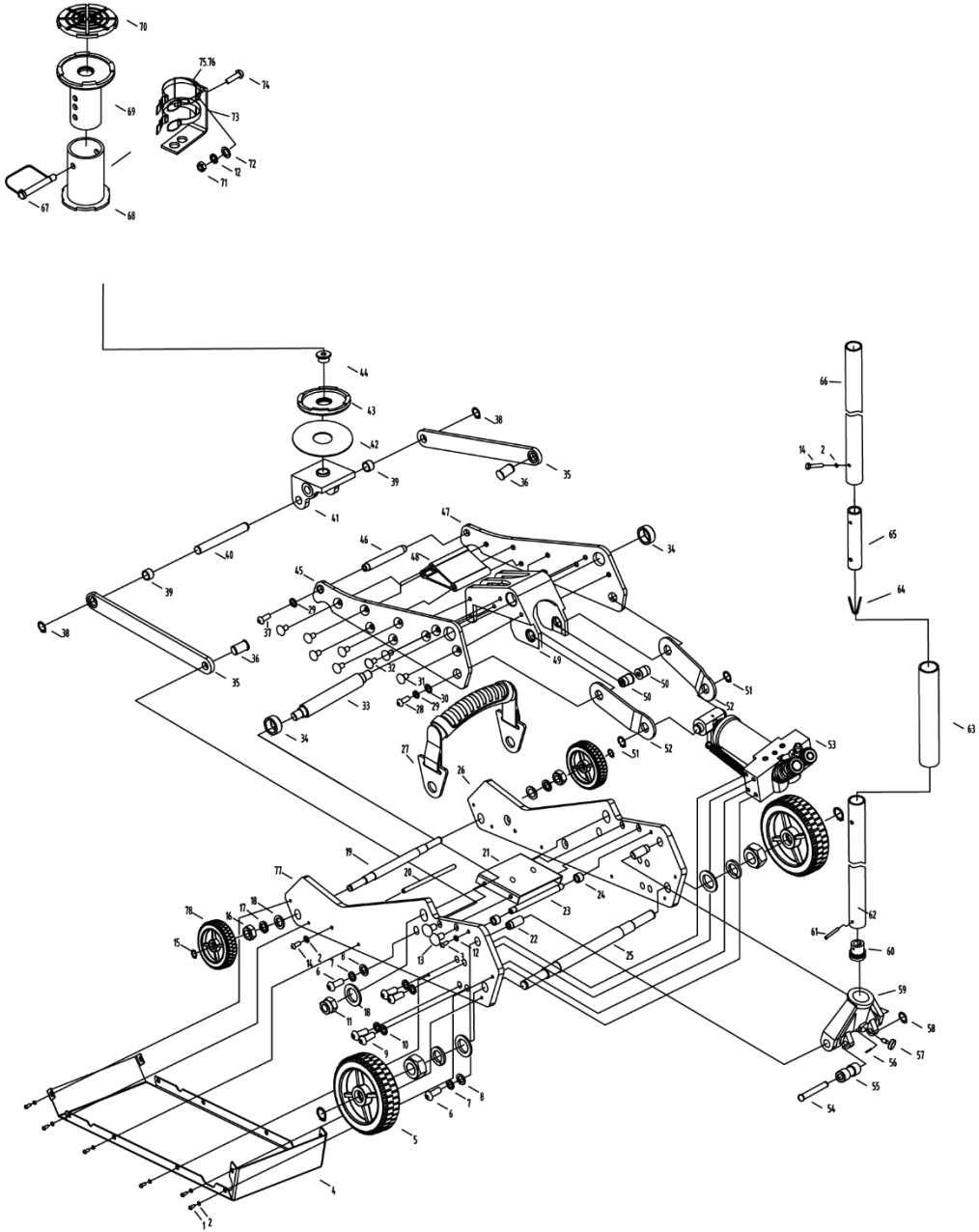
6. OPERATION

1. NEVER WORK ON A VEHICLE WITHOUT PROPER JACK STANDS!!
2. Do not use the jack as a dolly to move your car /truck /UTV or whatever across the shop.
3. Do not over load the jack. It is a 3 ton jack.
4. Lift from the frame or solid part of the chassis only.
5. When lifting, remember that the load point travels up at an arc. Meaning it does not go straight up. The jack needs to be able to move under the load while lifting OR the vehicle needs to be able to move towards the jack. If neither is able to move then the extension will start to bind and something is going to bend or break.
6. Always try and operate the jack on hard level surfaces. We understand that this isn't always possible and we have done our best to make sure that jack works in those "not so ideal situations". The large tires will sink on soft ground and the weight will be distributed by the built in sand plate. In this situation use extreme caution. The jack will be unstable and could shift or lean. PAY ATTENTION TO WHAT IS HAPPENING!

7. STORING THE JACK AND MAINTAINENCE

1. Always store the jack in the fully lowered position. We are often asked if the jack can be stored nose down if amount is on the side of a truck. The answer is yes. Please refer to the above instructions on pressurizing the system to remove any air. On occasion, when stored nose down, the jack needs to be pumped a few times once it is put back on the ground for it to work properly again.
2. Occasionally check the fluid level and lubricate the springs, plungers and pivot points.

8. EXPLODED VIEW



No.	DESCRIPTIONS	Q'TY	No.	DESCRIPTIONS	Q'TY
1	Screw	12	40	Bracket Rod Shaft	1
2	Washer	15	41	Saddle Base	1
3	Screw	2	42	Rubber Pad	1
4	Base	1	43	Saddle	1
5	Rear Wheel	2	44	Screw	1
6	Screw	4	45	Left Frame of Lifting Arm	1
7	Washer	4	46	Lifting Arm Axle	1
8	Washer	4	47	Right Frame of Lifting Arm	1
9	Screw	8	48	Reinforcement Block B	1
10	Washer	8	49	Reinforcement Block A	1
11	Nut	2	50	Short connection rod axle	2
12	Washer	3	51	Gasket Ring	2
13	Screw	4	52	Short connection rod	2
14	Screw	3	53	Hydraulic Pump	1
15	Gasket Ring	4	54	Roller shaft of Handle socket	1
16	Nut	4	55	Roller of Handle socket	1
17	Washer	4	56	Pin	1
18	Washer	6	57	Screw	1
19	Front Wheel Axle	1	58	Gasket Ring	1
20	Limited Rod of lifting arm	1	59	Handle Socket	1
21	Cover Board	1	60	Universal Joint Sleeve	1
22	Handle Socket Axle	2	61	Pin	1
23	Limited Rod of handle socket	1	62	Lower Handle	1
24	Stop Ring of handle socket	2	63	Handle Sleeve	1
25	Rear Wheel Axle	1	64	Pin	1
26	Right Frame	1	65	Middle Handle	1
27	Handle	1	66	Upper Handle	1
28	Screw	2	67	Pin	1
29	Washer	4	68	Bottom pipe component	1
30	Washer	2	69	Regulating tube component	1
31	Screw	2	70	Upper Rubber Pad	1
32	Screw	14	71	Nut	1
33	Lifting arm rod	1	72	Washer	1
34	Lift arm spacer	2	73	Shelf component	1
35	Long connection rod	2	74	Bolt	1
36	Long connection rod axle	2	75	Rivet	2
37	Screw	2	76	Hoop component	2
38	Gasket Ring	2	77	Left Frame	1
39	Long connecting rod spacer	2	78	Front Wheel	1

CANNON TOOLS LTD

Add: 20 station road, Rowley Regis, west midlands,B65 0JU.U.K.

www.neilsentools.com

Made in China