

# TOOL USE INSTRUCTION

**RIVIAN**

TOOL NUMBER TSN00366-103

TITLE WIPER ARM REMOVAL TOOL

REV - DATE REV 1 - 04/27/2026

## CONTENTS

[OVERVIEW](#)

[SAFETY](#)

[INITIAL SETUP](#)

[TOOL USE INSTRUCTION](#)

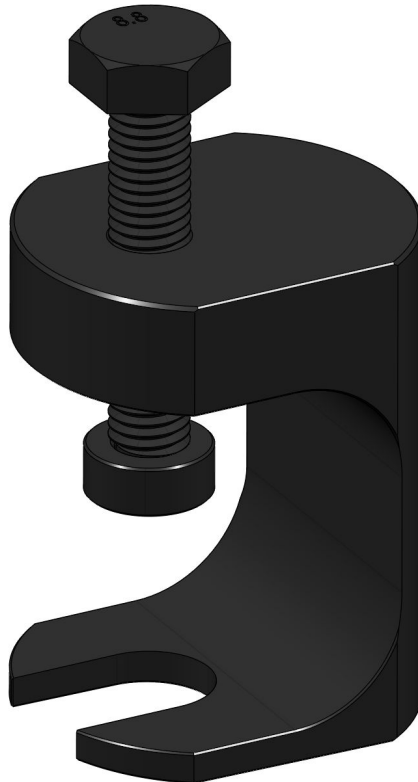
[MAINTENANCE & STORAGE](#)

[TROUBLESHOOTING](#)

[SYMBOL GLOSSARY](#)

## TOOL FUNCTION

PULL BOLTED WIPER ARM FROM R2



## OVERVIEW

---

### LABOR CODES

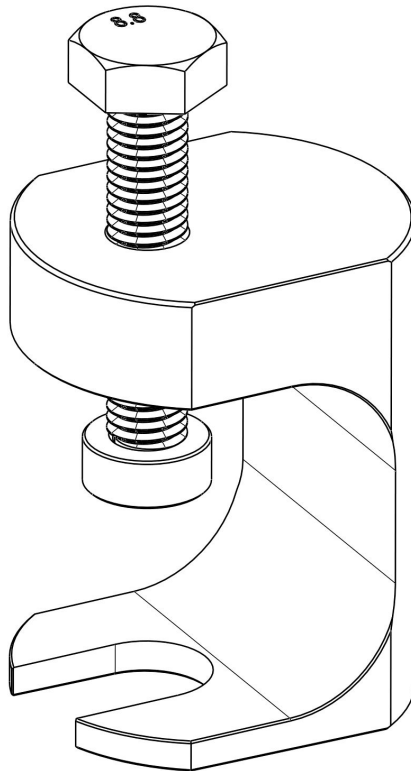
781430110 - Arm, Wiper, Front, RH (Remove and Replace)

781430010 - Arm, Wiper, Front, LH (Remove and Replace)

### OTHER TOOLS REQUIRED

TSN00112-100-A - SKT, 3/8" DR, SHALLOW, 15MM

TSN00058-100-A - RATCHET, 3/8" DR, FLEX HEAD, 10-5/16"



### COMPONENT GUIDE

RIVIAN TOOL ID	DESCRIPTION
TSN00366-103-A	WIPER ARM REMOVAL TOOL





**WARNING**



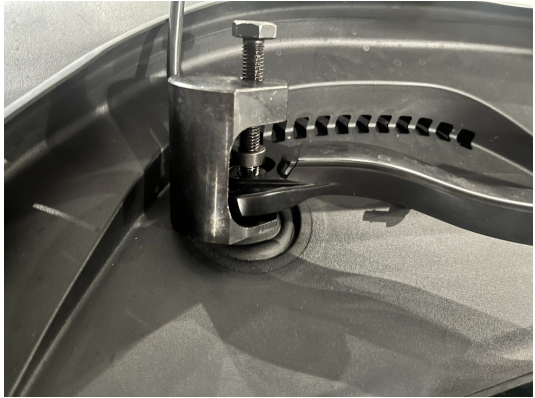
Do not perform procedure if tool is damaged or missing parts. Consult the Rivian Service Tool Catalog for replacement components.

Failure to follow guidelines outlined in this document could result in injury and/or property damage.

**SAFETY GUIDELINES**

1	Risk of pinch hazard when using this tool. Avoid placing fingers between the tool and the wiper arm	
---	---	--

## TOOL USE INSTRUCTION

1	<p>Open the hood and remove the cap from the wiper arm</p>	
2	<p>Disconnect the washer fluid line from the barb fitting on the cowl</p> <p>Remove the nut from the wiper arm stud</p>	
3	<p>Back out the forcing screw far enough to position the tool onto the wiper arm. Slide the base of the puller under the wiper arm and around the stud.</p> <p>With the cup of the forcing screw over the threaded portion of the stud, use a 13mm wrench to turn the forcing screw clockwise until the wiper arm pops off the stud.</p>	



**BASIC MAINTENANCE GUIDE**

<b>TASK</b>	<b>FREQUENCY</b>
Check that the tool is intact and not damaged.	Before Each Use
Return tool to the storage cabinet or drawer.	After Each Use

**TROUBLESHOOTING**

<b>PROBLEM</b>	<b>SOLUTION</b>
The puller will not fit over the wiper arm base	Make sure the forcing screw is backed out enough to allow the tool to fit over the wiper arm base.





**DANGER**

Risk of electrocution or electric shock



**WARNING**

Risk of minor injury



**DANGER**

Risk of major injury such as

- fire
- chemical or poison
- crushing / maiming
- death



**CAUTION**

Risk of

- damage to vehicle or property
- data disruption
- voiding warranty

**IMPORTANT**

Instructions to successfully complete a task

**NOTE**

Useful information

**REVISION LOG**

---

REV	DATE	CHANGE DESCRIPTION
1	04/27/2026	Initial release

