

# TOOL USE INSTRUCTION

**RIVIAN**

TOOL NUMBER **TSN01785**

TITLE **TORQUE ADAPTER 21MM**

REV - DATE **REV 1 - 06/09/26**

## CONTENTS

[OVERVIEW](#)

[SAFETY](#)

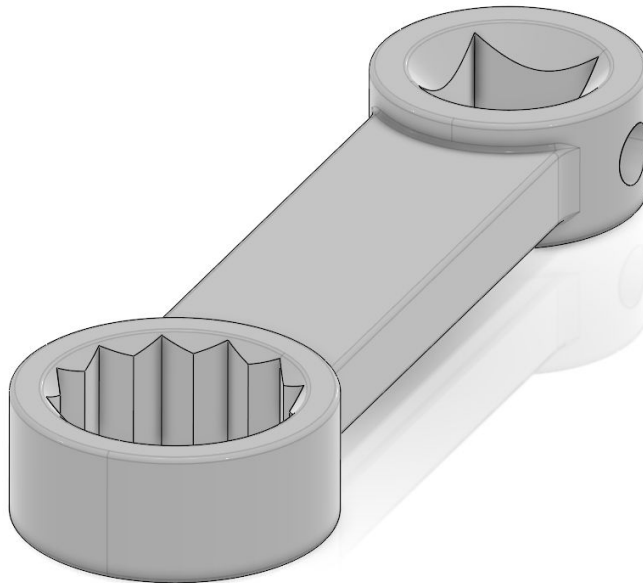
[TOOL USE INSTRUCTION](#)

[MAINTENANCE AND STORAGE](#)

[SYMBOL GLOSSARY](#)

## TOOL FUNCTION

USED FOR TORQUING R2 REAR MOTOR MOUNT BOLT



## OVERVIEW

---

### SPECIFICATIONS

Weight: 0.127 KG

Overall Dimensions: 105mm X 31mm X 13mm

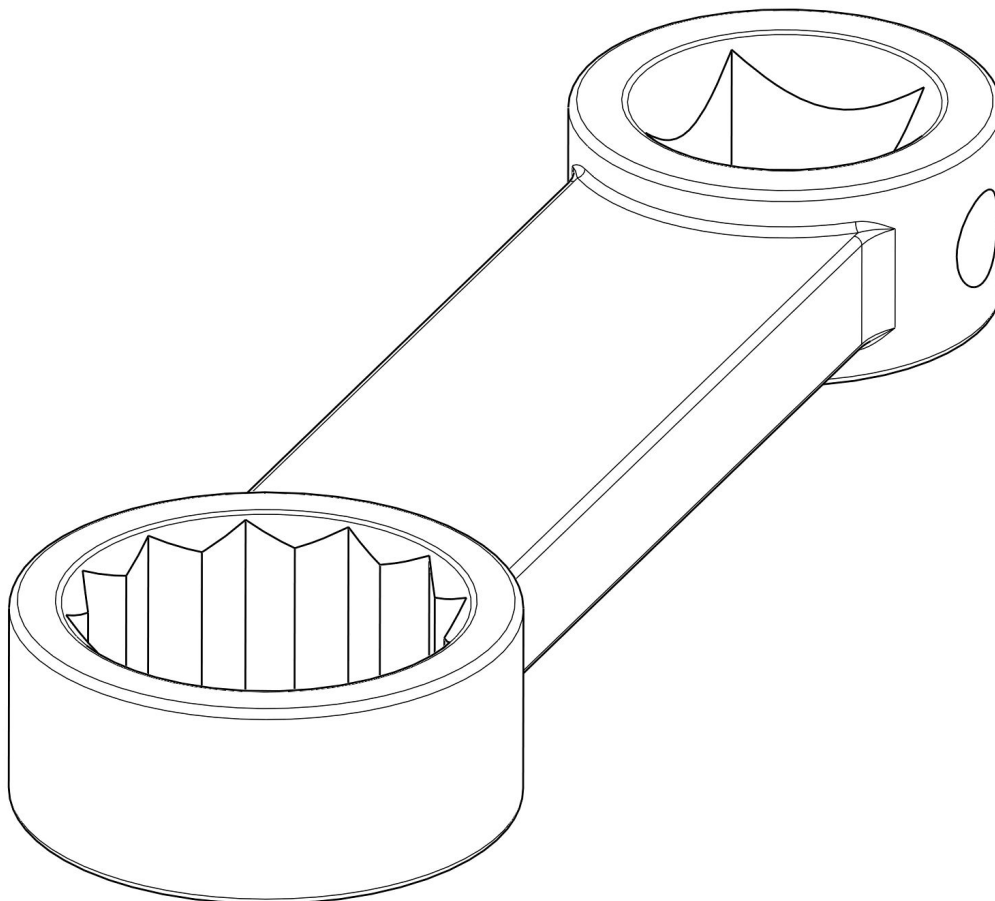
### LABOR CODES

421010010

### OTHER TOOLS REQUIRED

TSN00049-100-A - 1/2" DIGITAL TORQUE WRENCH (33-338NM) TORQUE +ANGLE

4





**WARNING**

Do not perform procedure if tool is damaged or missing parts. Consult the Rivian Service Tool Catalog for replacement components.

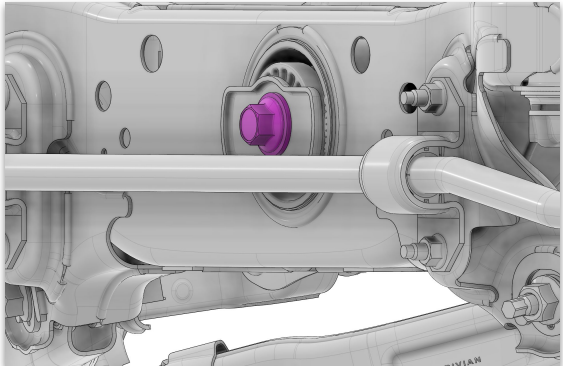
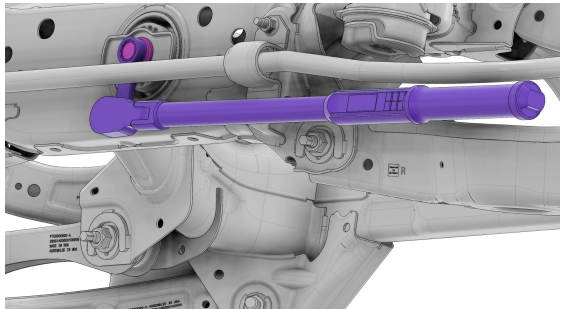
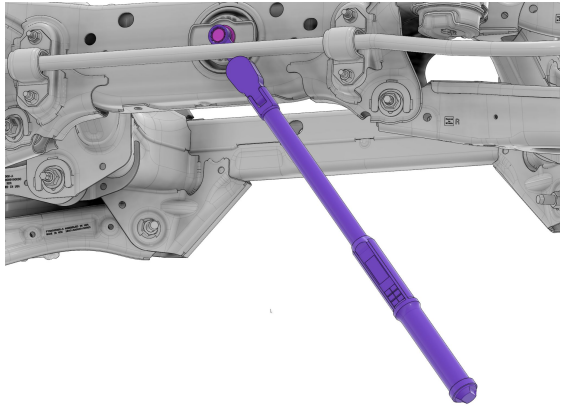
Failure to follow guidelines outlined in this document could result in injury and/or property damage.

**SAFETY GUIDELINES**

<p>1</p>	<p><b>PPE REQUIRED</b></p> <ul style="list-style-type: none"> <li>• eye protection</li> <li>• closed toe shoes</li> <li>• gloves</li> </ul>	
<p>2</p>	<p><b>CAUTION</b></p> <p>Risk of Pinch Point</p> <ul style="list-style-type: none"> <li>• keep hands and fingers clear of all moving parts.</li> </ul>	
<p>3</p>	<p><b>WARNING</b></p> <p>Risk of minor injury</p>	



## TOOL USE INSTRUCTION

1	<p>Install the bolt for the rear motor mount. Tighten to the point that the bolt flange is in contact with the plate</p>	 A technical illustration of a vehicle's rear motor mount assembly. A purple bolt is shown being inserted into a hole in a metal plate. The bolt is positioned vertically, and its flange is about to make contact with the plate. The surrounding chassis components are shown in a light gray color.
2	<p>For the torque portion of the sequence, position the adapter 90° to the body of the torque wrench.</p>	 A technical illustration showing a purple torque wrench with a purple adapter. The adapter is positioned at a 90-degree angle to the main body of the torque wrench. The adapter is inserted into the hole of the motor mount assembly, which is shown in a light gray color.
3	<p>For the angle portion of the sequence, position the torque adapter in line with the body of the torque wrench</p>	 A technical illustration showing the purple torque wrench with the purple adapter. The adapter is now positioned in line with the main body of the torque wrench. The adapter is inserted into the hole of the motor mount assembly, which is shown in a light gray color.



**BASIC MAINTENANCE GUIDE**

<b>TASK</b>	<b>FREQUENCY</b>
Check the adapter for any damage or defects.	Before Each Use
Return the airbag to the appropriate toolbox location	After Each Use





**DANGER**

Risk of electrocution or electric shock



**WARNING**

Risk of minor injury



**DANGER**

Risk of major injury such as

- fire
- chemical or poison
- crushing / maiming
- death



**CAUTION**

Risk of

- damage to vehicle or property
- data disruption
- voiding warranty



**CAUTION**

Risk of Pinch Point

- keep hands and fingers clear of all moving parts.



**PPE REQUIRED**

**IMPORTANT**

Instructions to successfully complete a task

**NOTE**

Useful information

**REVISION LOG**

REV	DATE	CHANGE DESCRIPTION
1	06/09/2026	Initial release

