

TOOL USE INSTRUCTION

RIVIAN

TOOL NUMBER

TSN00534-300-A

TITLE

KIT, COOLING SYSTEM PLUG

REV - DATE

REV A - 02/20/2026

CONTENTS

[OVERVIEW](#)

[SAFETY](#)

[INITIAL SETUP](#)

[TOOL USE INSTRUCTION](#)

[MAINTENANCE & STORAGE](#)

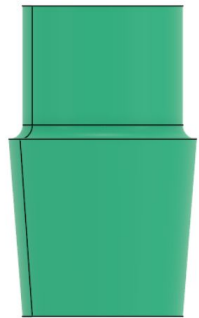
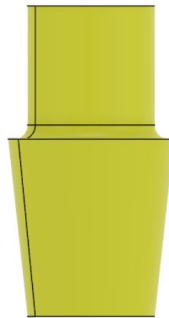
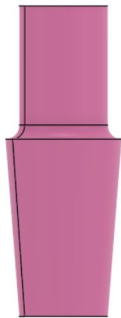
[SPARE PARTS](#)

[TROUBLESHOOTING](#)

[SYMBOL GLOSSARY](#)

TOOL FUNCTION

PLUGGING COOLANT CONNECTIONS.






**WARNING**

Do not perform procedure if tool is damaged or missing parts. Consult the Rivian Service Tool Catalog for replacement components.

Failure to follow guidelines outlined in this document could result in injury and/or property damage.

SAFETY GUIDELINES

1	<p>PPE Required</p> <ul style="list-style-type: none"> • Eye protection • Gloves 	
2	<p>Risk of Pinch Point</p> <ul style="list-style-type: none"> • Be careful when inserting or removing plugs 	
3	<p>Risk of</p> <ul style="list-style-type: none"> • Damage to vehicle or property • Ensure that all plugs are out-of-vehicle once procedure is complete 	



SPECIFICATIONS

WEIGHT: 2 LBS

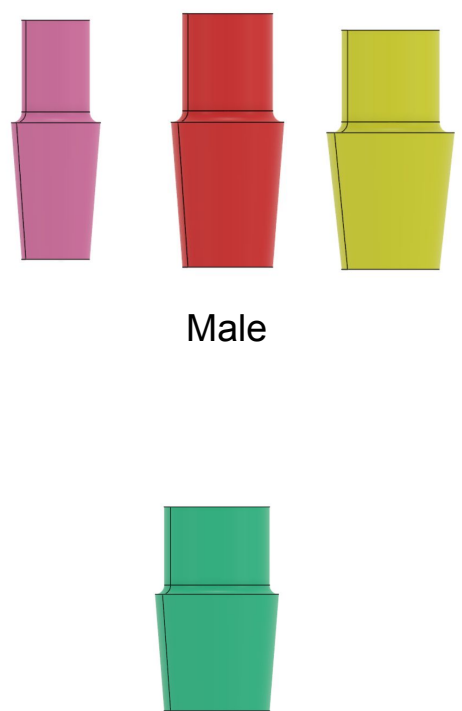
OVERALL DIMENSIONS: 60.3MM X 177.8MM X 279.4MM




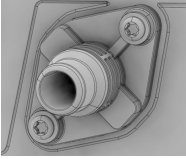
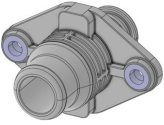



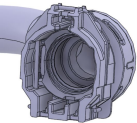

COMPONENT GUIDE

ITEM	QTY	RIVIAN TOOL ID	DESCRIPTION
1	8	TSN00534-200-A	TAPERED PLUG (12.7MM - 16.6MM) PINK
2	8	TSN00534-201-A	TAPERED PLUG (15.8MM - 19.8MM) RED
3	8	TSN00534-202-A	TAPERED PLUG (18.2MM - 23.8MM) YELLOW
4	8	TSN00534-203-A	TAPERED PLUG (23MM - 27MM) LIGHT GRN
5	1	AKRO-MILS 5805	PLASTIC STORAGE CONTAINER, MEDIUM


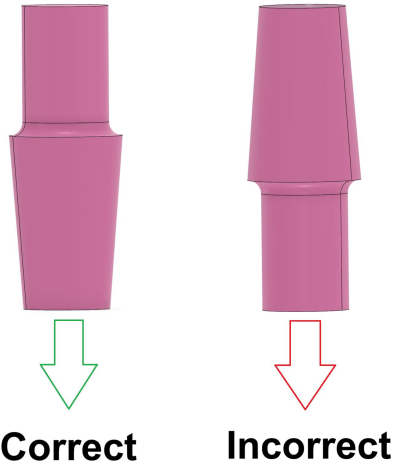


<p>1</p>	<p>In each kit, there's 4 different sized plugs.</p> <p>For male connections, red, yellow, and pink are utilized.</p> <p>For female connections, green is utilized.</p> <p>Each plug corresponds to a different coolant port size.</p>	 <p>Male</p> <p>Female</p>
----------	--	---



Port Image	Compatibility	Size (ID)	Tapered Plug(s) to Use
	<ul style="list-style-type: none"> • C1 • LFP100 (Bengal) 	14mm	
	<ul style="list-style-type: none"> • LFP100 (Baltic) 	14mm	
	<ul style="list-style-type: none"> • C3 • LFP100 (Baltic) 	15mm	
	<ul style="list-style-type: none"> • Gobi (R2 Battery) 	15mm	
	<ul style="list-style-type: none"> • Origin • Enduro • Ascent • Gobi (R2 Battery) 	16mm	
	<ul style="list-style-type: none"> • Maximus • Enduro • Ascent • Origin 	23.1mm	
	<ul style="list-style-type: none"> • Maximus • Enduro • Ascent • Origin 	23.1mm	
	<ul style="list-style-type: none"> • Enduro • Ascent • Origin 	21.4mm	



<p>1</p>	<p>Once disconnected, plug off the first connection as shown.</p> <p>Push plug into coolant port until it can no longer travel.</p> <p>Note: Do not bury the plug all the way into the port. If this happens the plug is too small and can get lodged too deep into the coolant manifold. Use the next size up.</p>	
<p>2</p>	<p>Ensure that the smaller OD leads-in when inserted.</p> <p>Do NOT lead-in using the larger OD.</p> <p>Ensure the plug seats on the taper</p> <p>Once verified, repeat steps 1-2 for remaining connections</p>	



3

Once servicing is completed, disconnect all plugs from the vehicle.

Ensure that ALL plugs are accounted for and aren't lodged or lost inside coolant hoses.

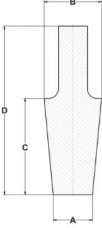
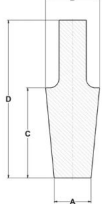
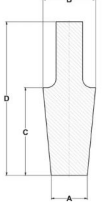
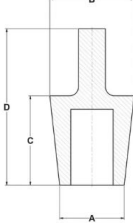
If a plug becomes lodged in the coolant manifold it can block flow and cause overheating

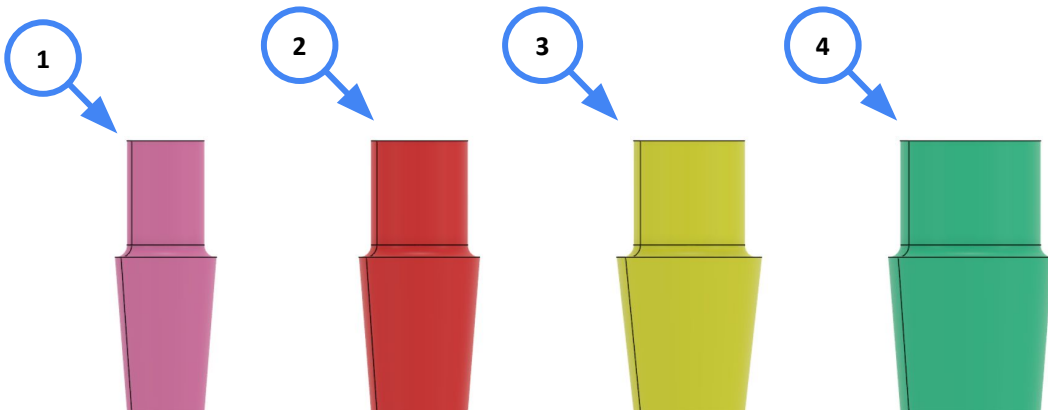


TASK	FREQUENCY
Inspect items in kit for wear, scratches, or nicks	Before Each Use
Clean each used item and return kit to its storage location	After Each Use



FOR OTHER ITEMS NOT SHOWN, CONTACT RIVIAN SERVICE TOOL ENGINEERING

ITEM	DESCRIPTION	SUPPLIER + PART NUMBER	PHOTO
1	TAPERED PLUG (12.7MM - 16.6MM) PINK	UP0-H	
2	TAPERED PLUG (15.8MM - 19.8MM) RED	UP2-H	
3	TAPERED PLUG (18.2MM - 23.8MM) YELLOW	UP3-H	
4	TAPERED PLUG (23MM - 27MM) LIGHT GRN	HUP5-H	



PROBLEM	SOLUTION
Plug is showing excessive resistance or doesn't fit during install	<ul style="list-style-type: none">● Make sure that smaller end is leading-in● Use a smaller plug size
Plug is looser than expected and/or drops into port after install	<ul style="list-style-type: none">● Retrieve the lost plug from-vehicle● Use a larger plug size





PPE REQUIRED

- eye protection
- gloves



CAUTION

Risk of

- damage to vehicle or property

REV	DATE	CHANGE DESCRIPTION
A	02/20/2026	Initial release

