

TOOL USE INSTRUCTION

RIVIAN

TOOL NUMBER **TSN00536-300-B**

TITLE **RIDE HEIGHT TORQUE TOOL**

REV - DATE **REV A - 12/11/2024**

CONTENTS

[OVERVIEW](#)

[SAFETY](#)

[INITIAL SETUP](#)

[TOOL USE INSTRUCTION](#)

[MAINTENANCE & STORAGE](#)

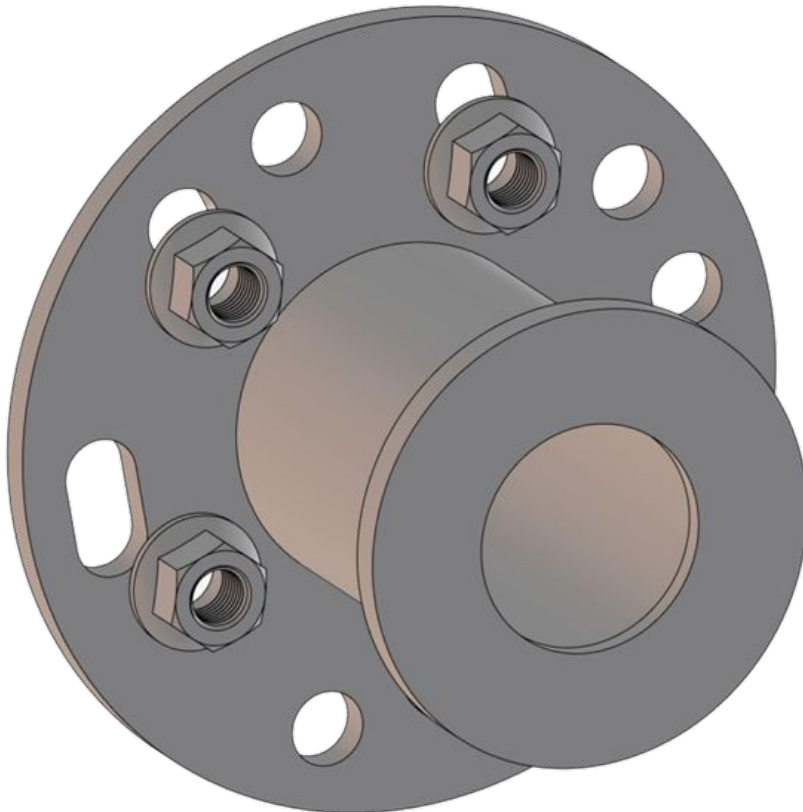
[SERVICE & REPLACEMENT PARTS](#)

[TROUBLESHOOTING](#)

[SYMBOL GLOSSARY](#)

TOOL FUNCTION

TORQUE SUSPENSION AT RIDE HEIGHT



OVERVIEW

SPECIFICATIONS

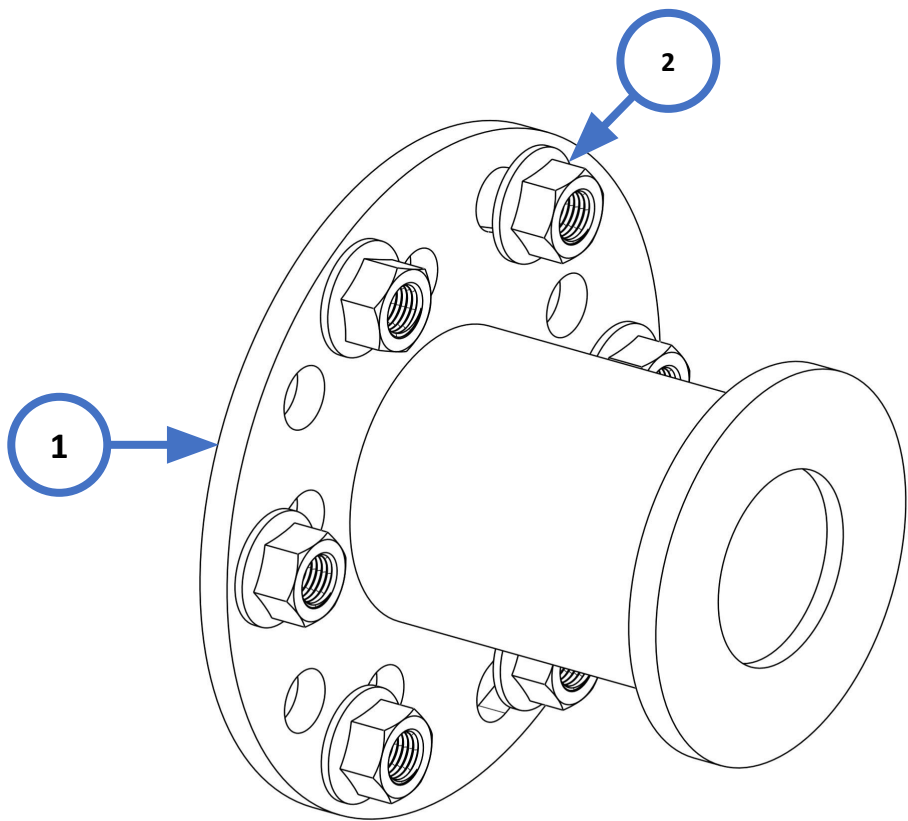
WEIGHT: 2.5 KG
OVERALL DIMENSIONS: 176MMX176MMX107MM

- LABOR CODES
- 1810 – FRONT SUSPENSION
 - 1832 – REAR SUSPENSION

OTHER TOOLS REQUIRED

TSN00049-100-A – UNDERHOIST STAND or

TSN01551-101-A – SUPPORT STAND, TRI-POD



COMPONENT GUIDE

ITEM	QTY	RIVIAN TOOL ID	DESCRIPTION
1	1	prd23750493	RIDE HEIGHT TORQUE TOOL WELDMENT
2	6	prd23895846	NUT - M14X1.5 HX FL ZN CL10





WARNING

Do not perform procedure if tool is damaged or missing parts. Consult the Rivian Service Tool Catalog for replacement components.




Failure to follow guidelines outlined in this document could result in injury and/or property damage.

SAFETY GUIDELINES

1	<p>Risk of minor injury</p> <ul style="list-style-type: none">• Pinch or minor cut• Be cautious of areas where body parts or clothing could get caught or crushed between moving parts of the equipment, potentially causing serious injury	
---	--	--

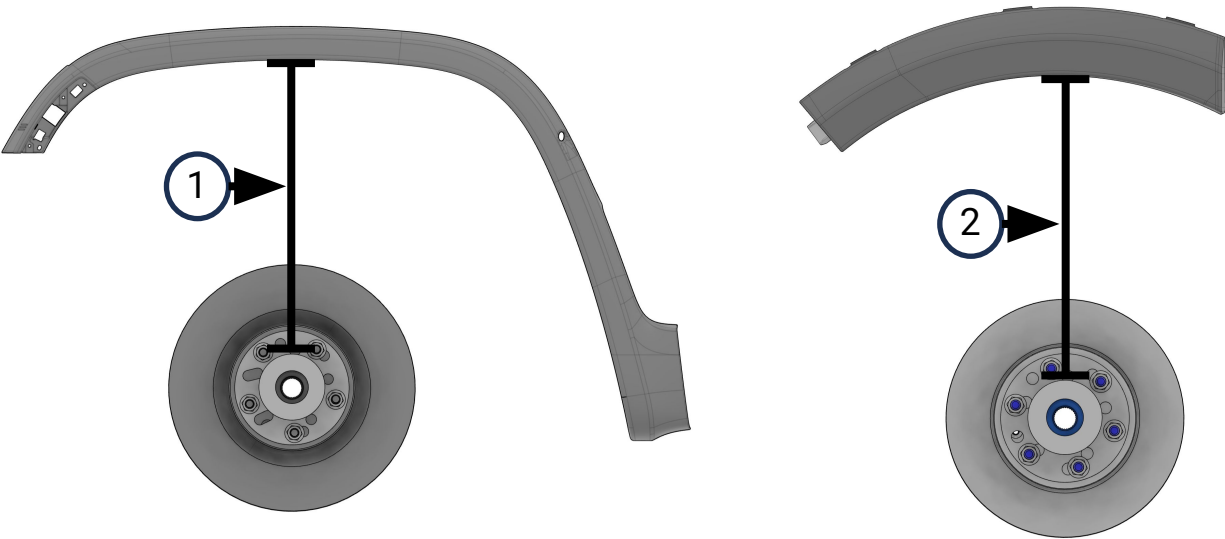


INITIAL SETUP

1	<p>Before you begin -</p> <ul style="list-style-type: none">• Ensure that the vehicle is stable on the lift and at a good height to perform the procedure• If applicable; depressurize the air suspension and kinetic prior to using the tool	
2	<p>Mount RIDE HEIGHT TORQUE TOOL to the face of the hub using the appropriate bolt hole pattern using the provided M14 flange nuts. Tighten by hand.</p> <p>A – MSP B – EDV C – R1</p>	
3	<p>Place the pole jack under the center of the RIDE HEIGHT TORQUE TOOL as shown</p>	
4	<p>Use the pole jack to lift the suspension to ride height specified in the following table. Measure from the top of the outer flange to the center of the wheel arch.</p>	



INITIAL SETUP



	Vehicle	Front (mm)	Rear (mm)
1	R1T	451.5	466.5
1	R1S	451.5	466.5
2	EDV 500	415.4	87.2
2	EDV 700	415.4	89.9



MAINTENANCE & STORAGE

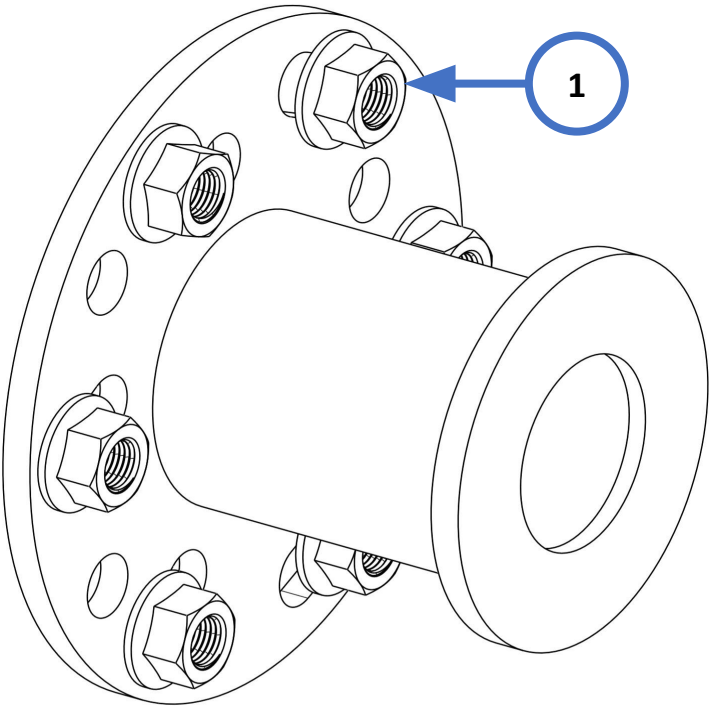
TASK	FREQUENCY
Return M14 Flange nuts to their bag.	After each use
Inspect assembly for visible damage or broken welds	Prior to each use



SERVICE & REPLACEMENT COMPONENTS

FOR OTHER ITEMS NOT SHOWN, CONTACT RIVIAN SERVICE TOOL ENGINEERING

ITEM	DESCRIPTION	SUPPLIER + PART NUMBER
1	NUT - M14X1.5 HX FL ZN CL10	MCMASTER-CARR PN - 95003A214



TROUBLESHOOTING

PROBLEM	SOLUTION
M14 nut will not thread onto wheel stud easily by hand	Ensure threads on nut are clean and undamaged Ensure threads on the stud are clean and undamaged
Unable to lift hub to desired ride height	If applicable; ensure air suspension and kinetic system is depressurized





WARNING

Risk of minor injury

REVISION LOG

REV	DATE	CHANGE DESCRIPTION
A	11/08/2024	Initial release

