

# TOOL USE INSTRUCTION

**RIVIAN**

TOOL NUMBER TSN00546-300-B

TITLE AXLE PRESS

REV - DATE REV A - 11/21/2024

## CONTENTS

[OVERVIEW](#)

[SAFETY](#)

[INITIAL SETUP](#)

[TOOL USE INSTRUCTION](#)

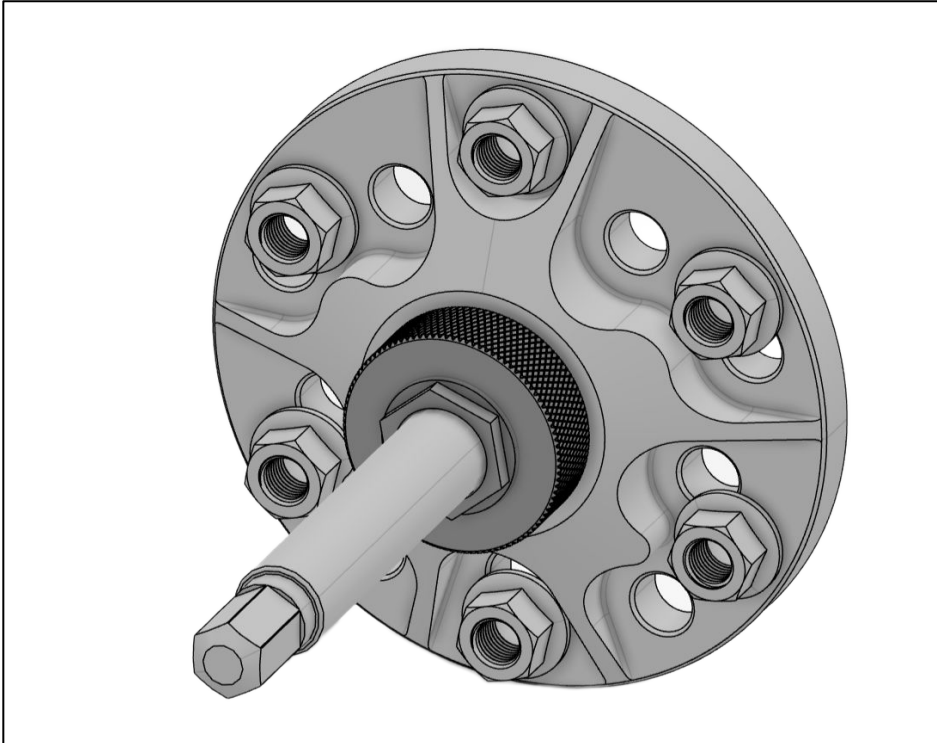
[MAINTENANCE](#)

[SERVICE & REPLACEMENT PARTS](#)

[TROUBLESHOOTING](#)

## TOOL FUNCTION

USED TO PRESS R1 AND EDV AXLES OUT OF A WHEEL HUB



OVERVIEW

SPECIFICATIONS

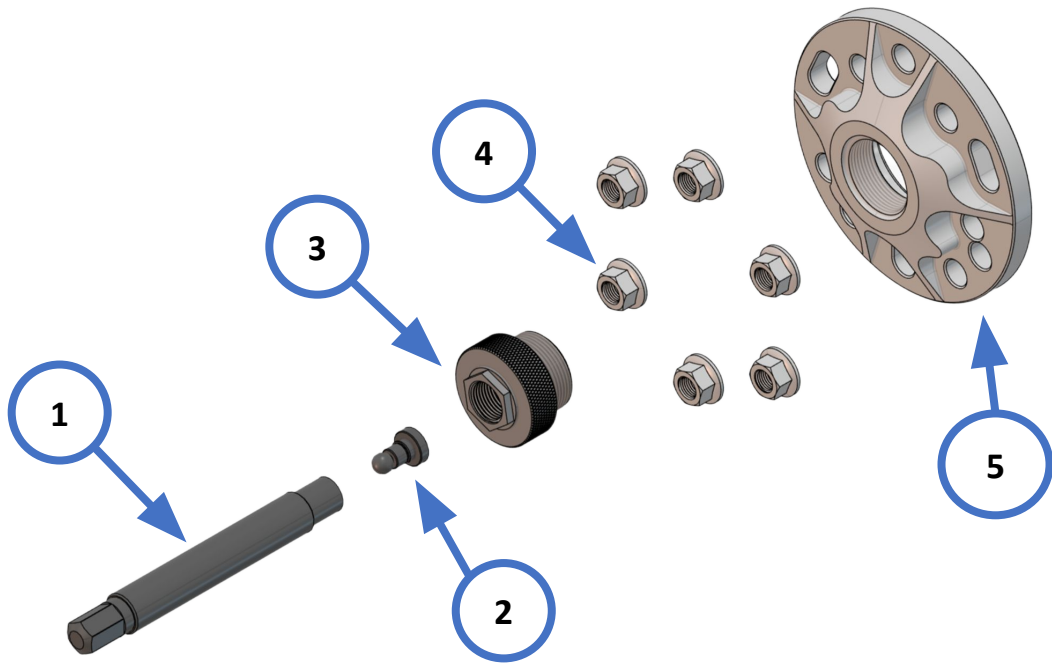
WEIGHT - 4.5 KG  
DIMENSIONS - 175mm x 175mm x 213mm

LABOR CODES

386410010 - Halfshaft, Front, LH (Remove and Replace) EDV or R1  
426410010 - Halfshaft, Rear, LH (Remove and Replace) R1

OTHER TOOLS REQUIRED

TSN00058-100-A - RATCHET, 3/8" DR. FLEX HEAD  
TSN00116-100-A - SKT, 3/8" DR, SHALLOW, 19mm  
TSN00117-100-A - SKT, 3/8" DR, SHALLOW, 21mm



ITEM	QTY	RIVIAN TOOL ID	DESCRIPTION
1	1	TSN00546-202-A	FORCING SCREW
2	1	TSN00546-201-A	FORCING TIP ASY
3	1	TSN00546-200-A	THREADED AXLE PRESS ADAPTER
4	6	prd23895846	NUT - M14X1.5 HX FL ZN CL10
5	1	prd23895851	AXLE PRESS HUB ADAPTER





## **WARNING**

Do not perform procedure if tool is damaged or missing parts  
Consult the Rivian Service Tool Catalog for replacement components  
Failure to follow guidelines outlined in this document could result in  
property damage, serious injury, or death

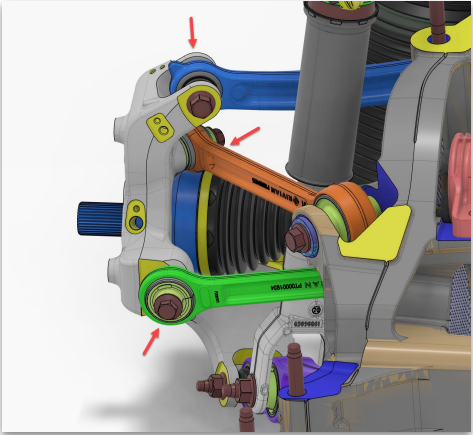

<b>1</b>	Wear all appropriate PPE including safety glasses, gloves and appropriate footwear.
<b>2</b>	Use a flange nut on EVERY stud on the hub (5 for R1 and 6 for EDV) and ensure they are snug.



## INITIAL SETUP

1	<p>Follow standard Rivian procedures for safely lifting the vehicle and removal of the wheel.</p>	
2	<p>Mount the AXLE PRESS HUB ADAPTER onto the hub using the M14 flange nuts provided.</p> <p>Tighten nuts with a 21mm socket and 3/8 ratchet. Hand tight is sufficient.</p>	
3a	<p>Front Axles (EDV &amp; R1) – Disconnect the upright assembly from the upper control arm and tie rod. This will grant enough mobility to remove the axle from the hub.</p>	



<p>3b</p>	<p>Rear Axles ( R1) – Disconnect the upright assembly from the blue, orange and green links to gain enough mobility to remove the axle from the hub.</p>	
<p>4</p>	<p>Use a 19mm socket and ratchet to drive the FORCING SCREW inward, pushing the axle out of the hub.</p>	



## MAINTENANCE

---

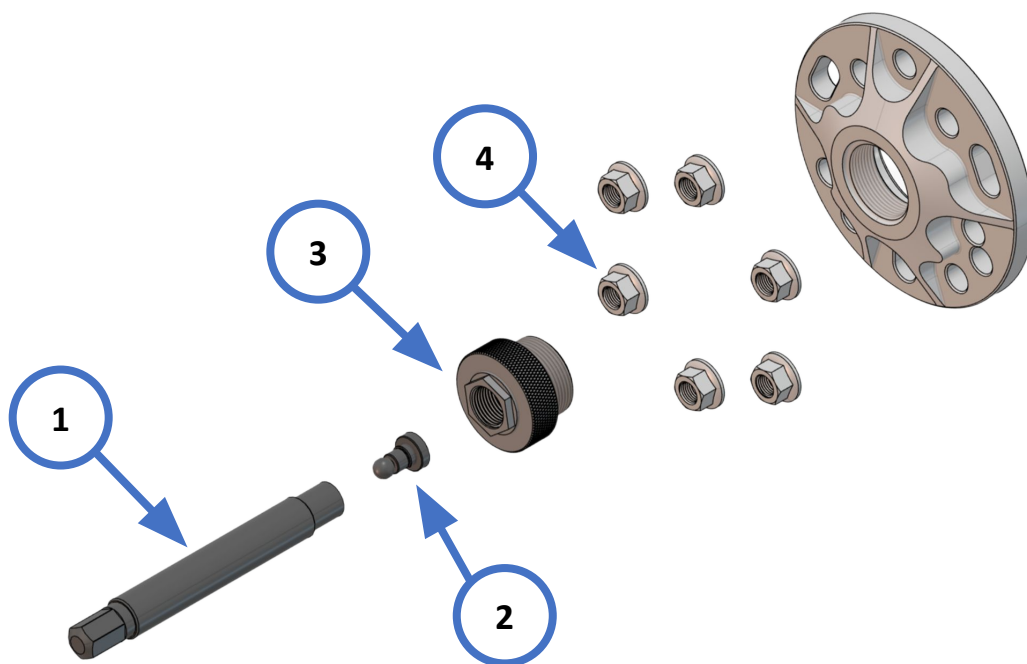
TASK	FREQUENCY
Apply a small amount of supplied moly grease on the threads of the forcing screw	Before first use, and before subsequent uses, check there is grease present on the threads
Inspect threads and forcing tip for damage	Prior to Use of the Tool
Return tool and all hardware to storage location	After Each Use



## SERVICE & REPLACEMENT COMPONENTS

FOR OTHER ITEMS NOT SHOWN, CONTACT RIVIAN SERVICE TOOL ENGINEERING

ITEM	DESCRIPTION	SUPPLIER + PART NUMBER
1	FORCING SCREW	SBS - TSN00546-202-A
2	FORCING TIP ASY	SBS - TSN00546-201-A
3	THREADED AXLE PRESS ADAPTER	SBS - TSN00546-200-A
4	NUT - M14X1.5 HX FL ZN CL10	MCMaster-CARR PN - 95003A214



## TROUBLESHOOTING

---

PROBLEM	SOLUTION
FORCING TIP falls out of FORCING SCREW	Check that the retaining clip is in place and undamaged. If missing or damaged, replace FORCING TIP ASY





## REVISION LOG

---

REV	DATE	CHANGE DESCRIPTION
A	11/8/2024	Initial release

