

NCT09247823: Rivian Door Badge Jig, R1, LH

This tool is used to install **Badge, Front Door** on R1T and R1S.

Using the tool



Note:

Refer to the Service Manual procedure for additional information:

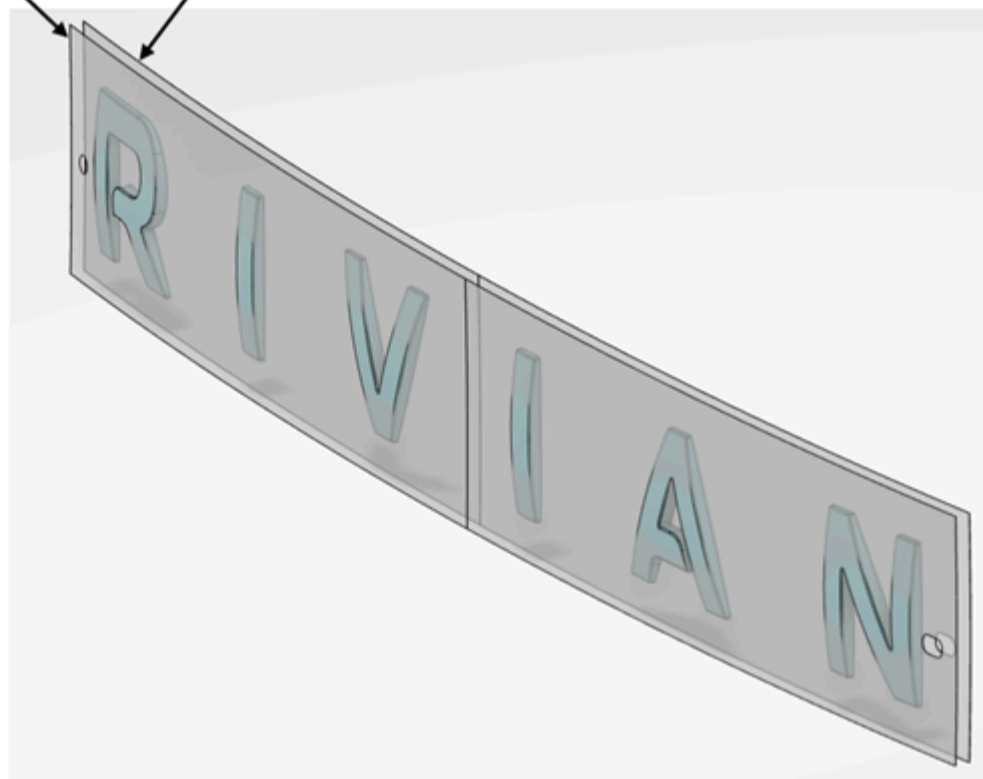
- [R1T](#)
- [R1S](#)



Note:

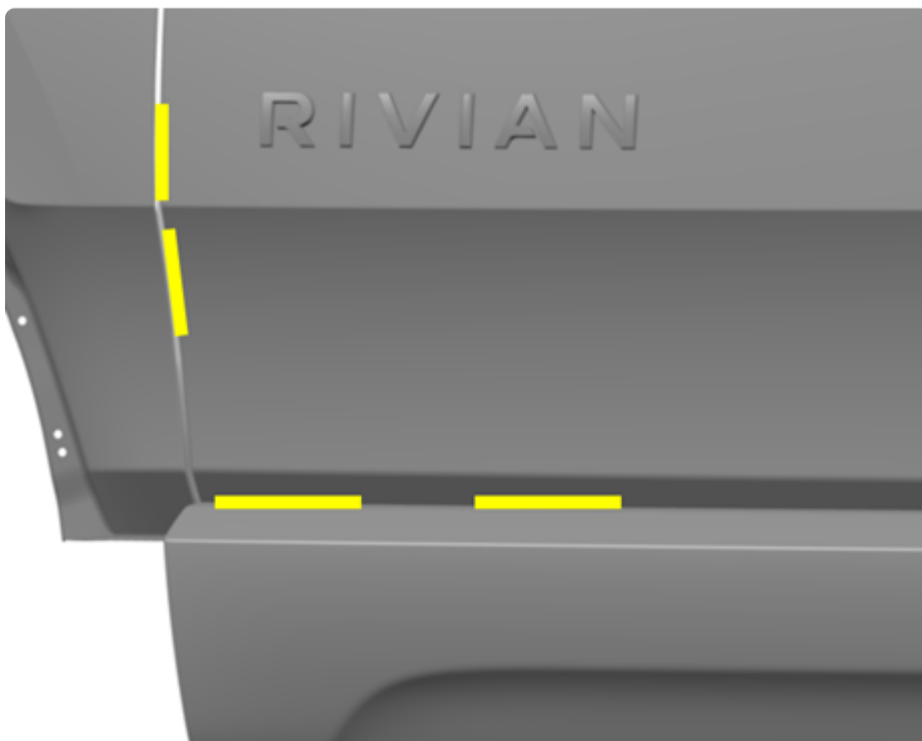
Do not remove either of the badge's liners until instructed to do so.

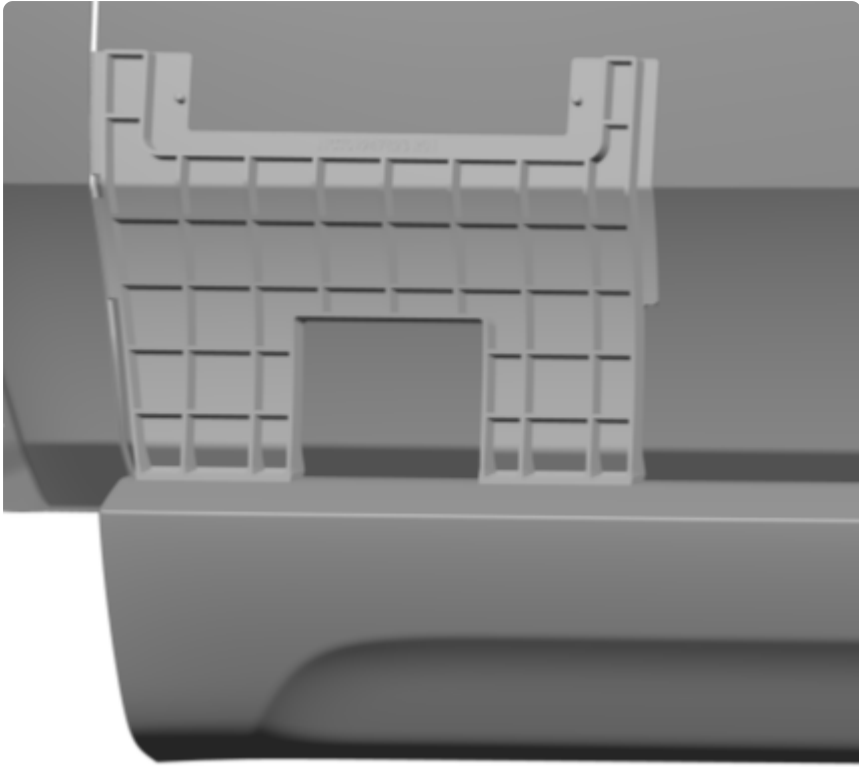
RELEASE LINER ADHESIVE LINER



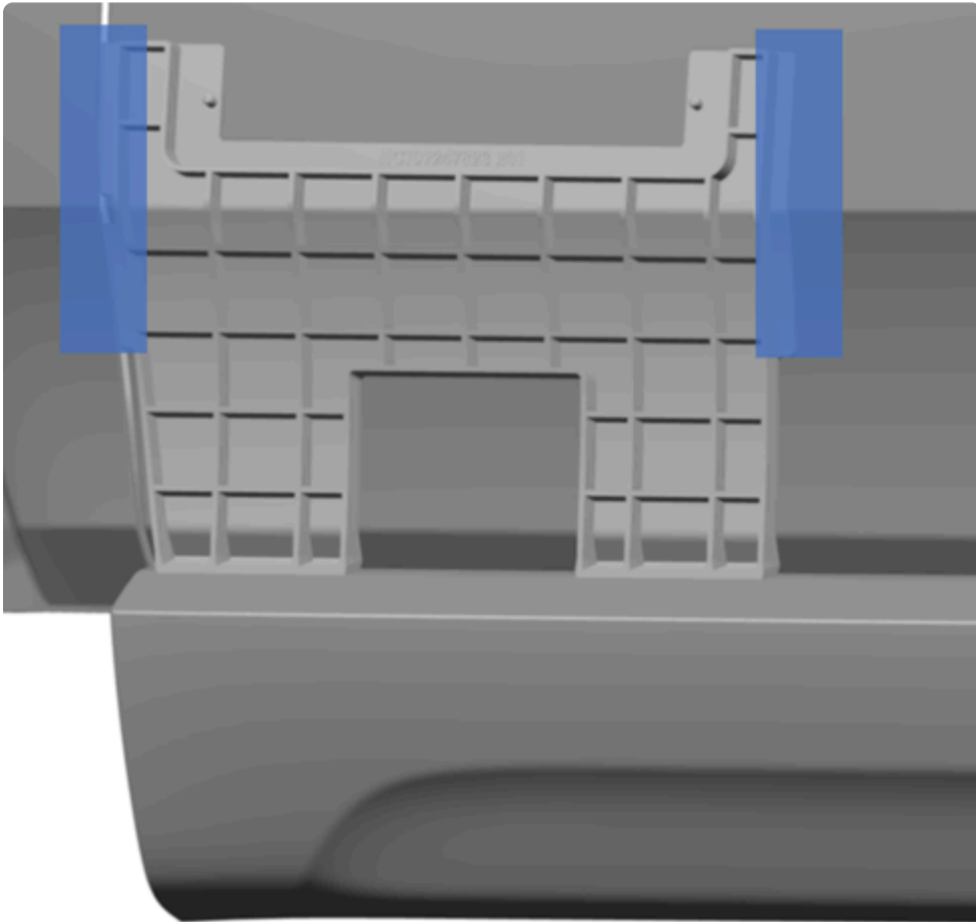
1	Release liner
2	Adhesive liner

1. Align the tool as shown.

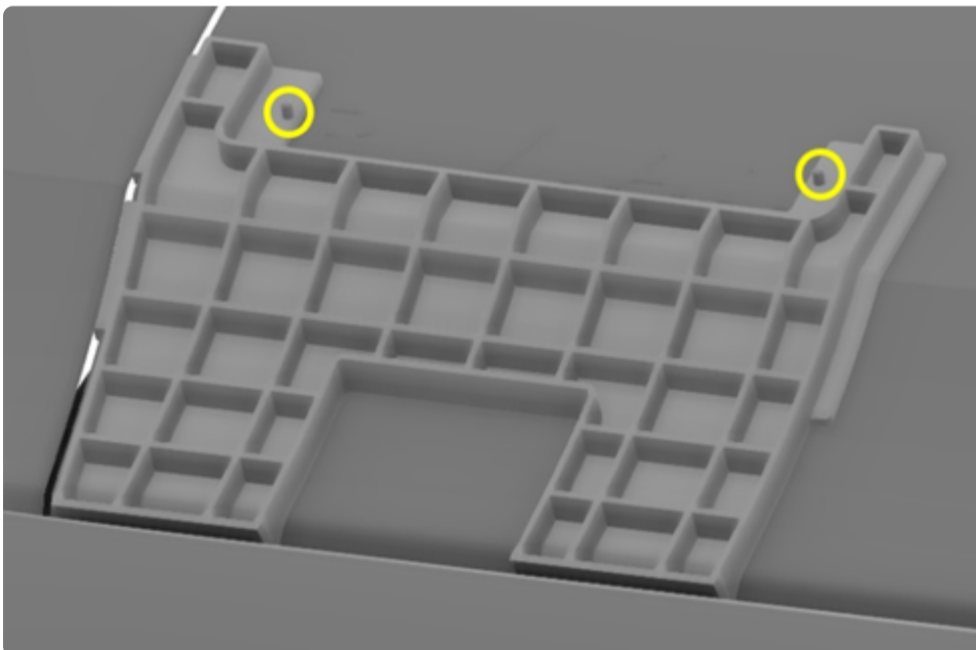


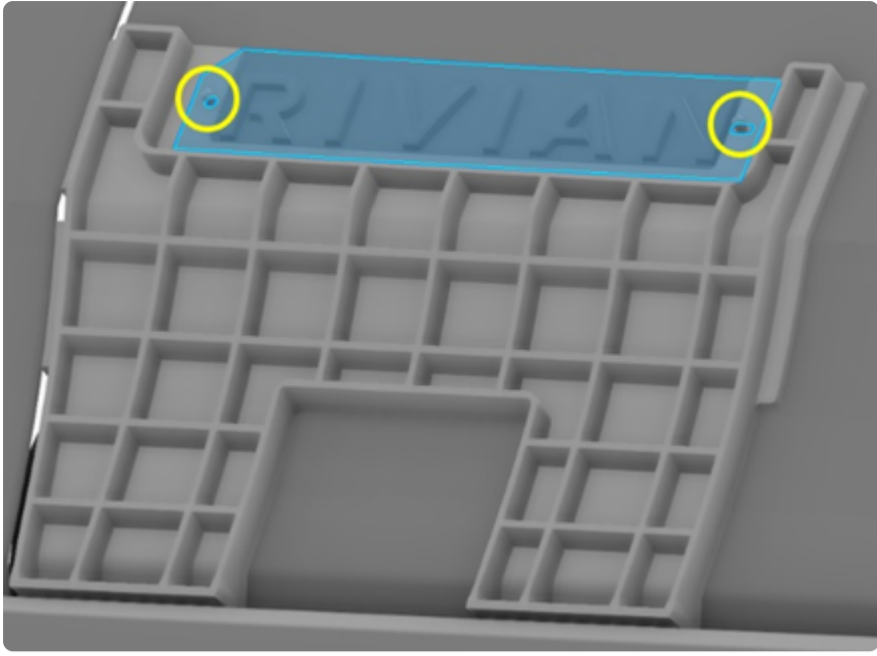


2. Use masking tape as necessary to hold the tool in place.



3. Test fit the badge by lining up the holes in the release liners with the locator posts on the tool.





4. Remove the adhesive liner, then line up the holes in the release liner with the locator posts on the tool. Press firmly on the badge for 30 seconds.
5. Remove the release liner and the tool.

