

TSN01126-300-A | NCT13786810 - EDV SPRING PLATE COMPRESSOR - TUI



Purpose:

This tool is used to compress the Front Leaf Spring assembly to aid with replacement of the front leaf spring assembly and the Front Subframe assembly on EDV

Labor Code: 465510010

Pre-requisites:

- R&I front subframe assembly
- R&I Steering rack

Additional Special Tools needed:

- TSN00542-200-A EDV SUBFRAME SUPPORT BRACKETS (used for R&I of the subframe assembly from the vehicle)
- TSN00542-300-B Subframe Fixture
- TSN00483-100-A Powertrain lift, 2500 lb. Capacity
- Torque Wrench

Notes: *Images and tool use instructions will be based on LEFT HAND (LH) side of vehicle. The process and steps are the same for both sides unless otherwise noted in the procedure.*

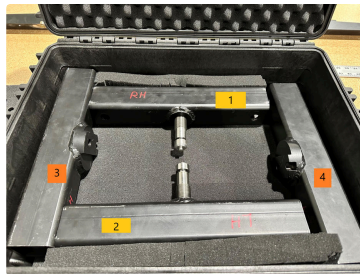
Layout of tool in Tool Kit:

- 1) RH Upper portion with screw down dowel
- 2) LH Upper Portion with screw down dowel

3) RH Lower Portion

4) LH Lower Portion

5) Guide and anchoring rods w/ fixed spacers and x2 each 22mm nuts on each guide rod



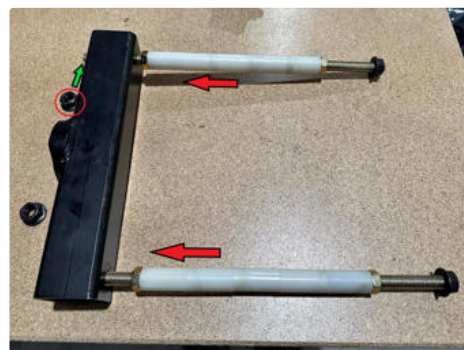
Tool Operation:

STEP 1:

Assemble the EDV Spring

Plate compressor tool:

- Install the rods (x2 per side with the nuts) into the bottom part of the Spring Compressor tool. The spacers (white) are set and dictate the height. Do this prior to use of the tool.



STEP 2:

This should be the lower set assembled before moving

forward to mounting it onto the subframe



NOTE:

The EDV Spring plate compressor tool is a made for both sides of the assembly and are labeled as so (Left Side/ Right Side) with an arrow to show orientation (outside).

STEP 3:

With the subframe out of the vehicle (On the Subframe jig support) Align the correct lower section of the EDV Spring plate compressor tool in the correct orientation (Pointing towards the outside).

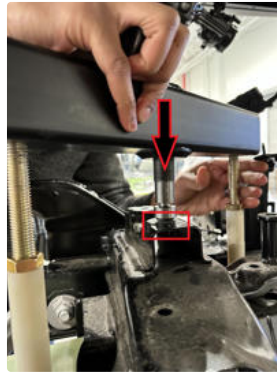
Lower part of the tool will keep the rods with the spacers (pointing upwards)



STEP 4:

Put the top assembly of the EDV Spring plate compressor tool on top of

the lower section. Align with the rods and spacers and guide the dowel to the locator on the subframe. You may need to adjust the tapered located dowel to get the appropriate height for the rods to go through the top assembly of the Spring plate compressor tool.



STEP 5:

To join the top and lower sections of the Spring plate compressor tool, install the x2 24mm nuts on top.

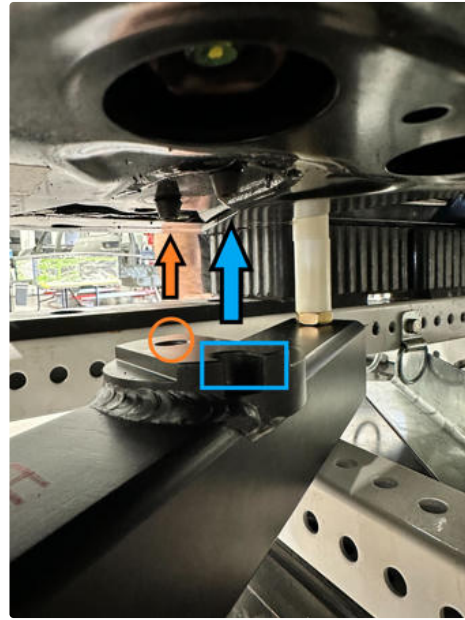


STEP 6:

As you tighten the assemblies together, be sure to align the lower section of the Spring plate compressor tool with the cutout for the spring rubber isolator

locators.

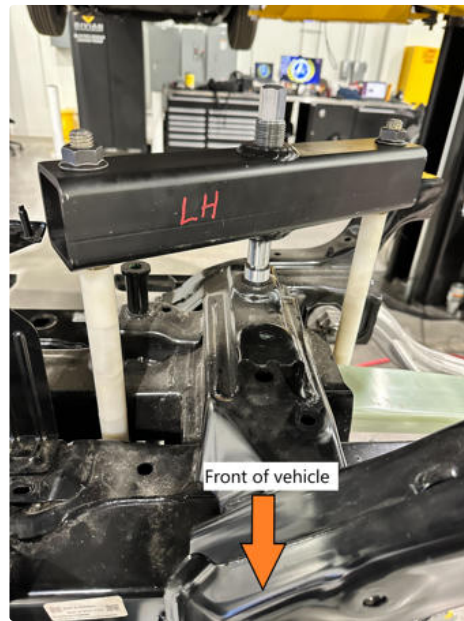
The lower Spring plate compressor tool components are specific to each side and labeled accordingly.



NOTE:

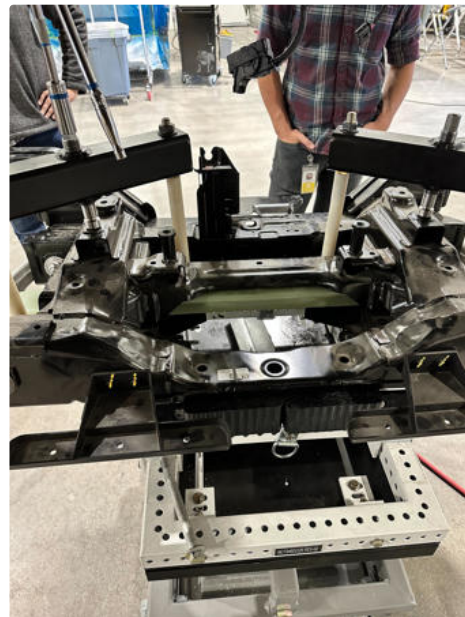
When both Spring plate compressor tools are fully installed it should look like this.





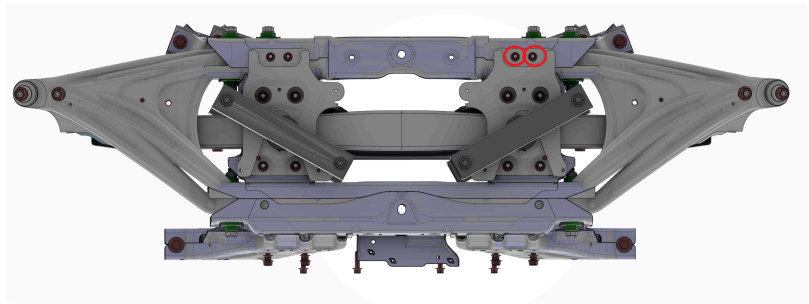
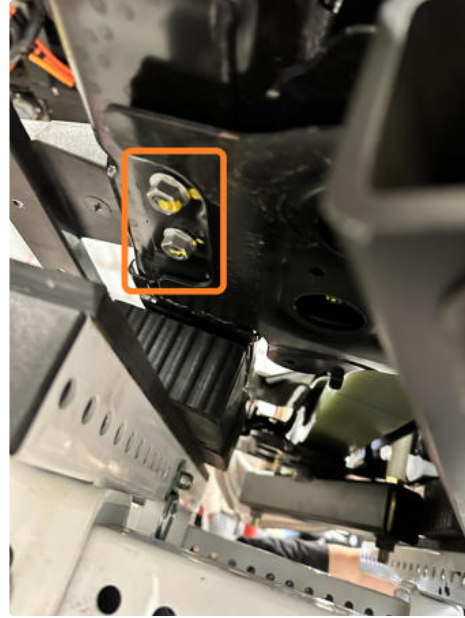
STEP 7:

Torque to dowel locator/
pressure applicator on top of
the spring compressor for
the removal procedure to 30
Nm



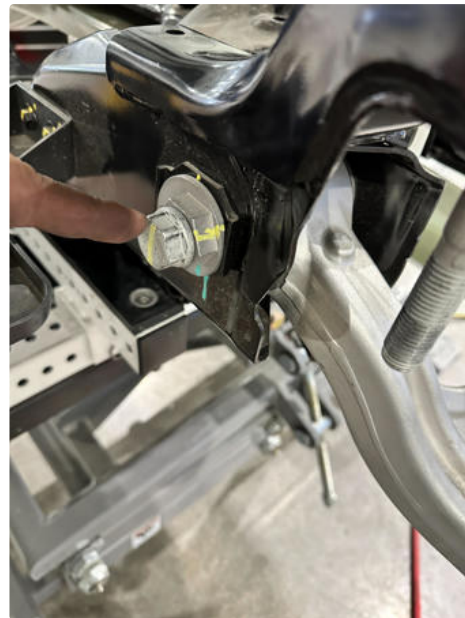
STEP 8:

Remove rear bolts (x2) of
the leaf spring backing plate
(both sides) from the
bottomside of the subframe



STEP 9:

Loosen Control arms to help allow the leaf spring to fully de-compress and be removed from the subframe after removal of the Leaf spring plate.

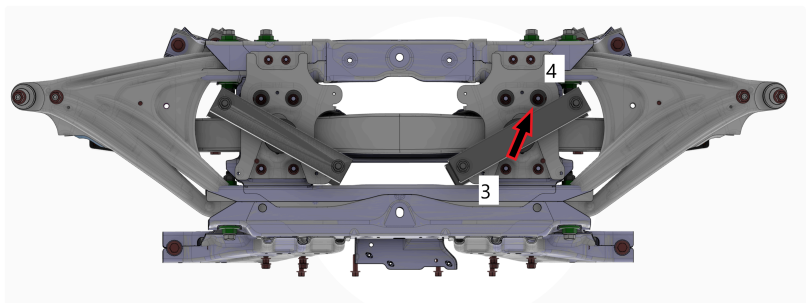
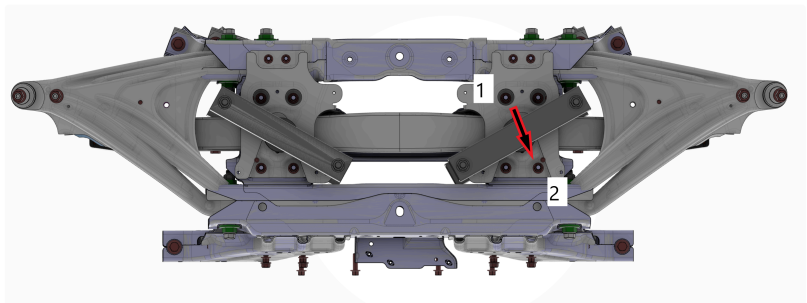
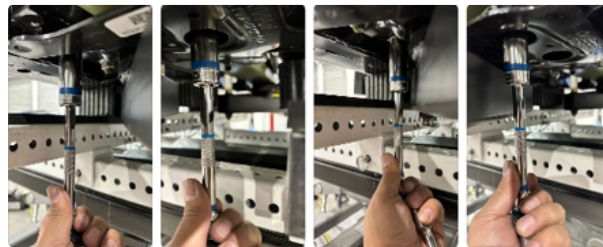




STEP 10:

Remove the remainder of the bolts from the Leaf spring backing plate (x4). Loosen them one at a time in a cross pattern sequence to slowly remove tension from the spring.

DO NOT completely remove one bolt!
Do this for both sides!



NOTE:

Leaf Spring Plate removed



Final Step for Removal:

You can now remove the leaf spring assembly from the subframe. Be aware of the rubber isolator inside and their placement in the subframe for re-installation.

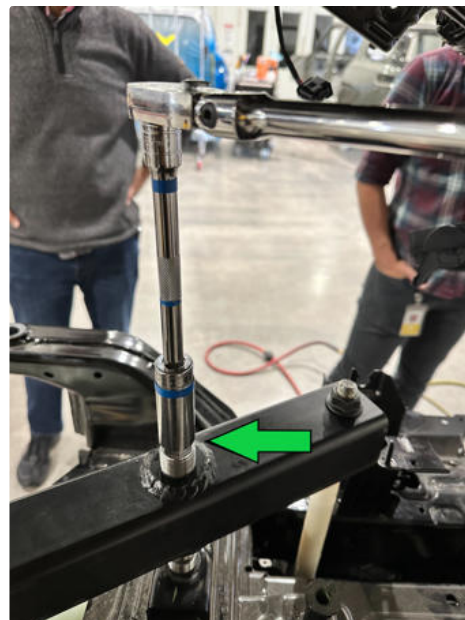
Installation:

For installation of the leafspring, the procedure is the same for setup (after the leafspring/ rubber isolators and backing plates are positioned for re-installation).

The only difference is the torque value for the tapered

Upper dowel locator should be set to 45 Nm.

This will allow the



*leafspring to be
compressed and and the
Lower backing plate to be
installed and torqued to the
factory specifications.*