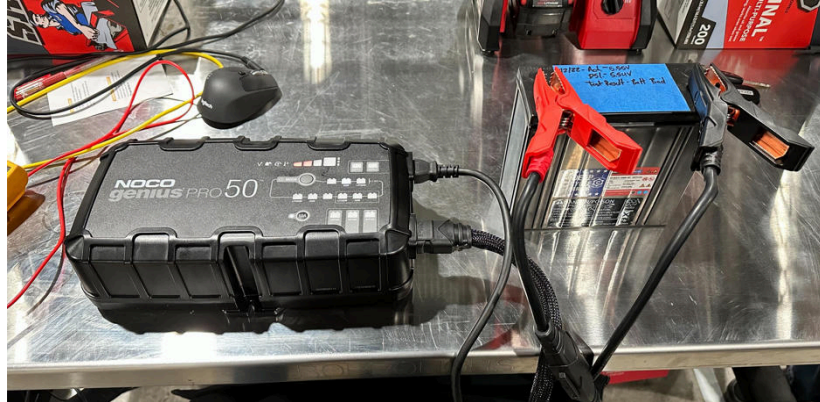


# TSN01158-100-A NOCO Genius PRO 50 12V Battery Charger



---

## Purpose:

This tool is used for:

- 12V support when the High Voltage Battery has been disconnected
- Benchtop Charging a Battery at 10 Amps

---

## Labor Code:

786410025 Battery, 12V, Primary (Charge)

786420025 Battery, 12V, Secondary (Charge)

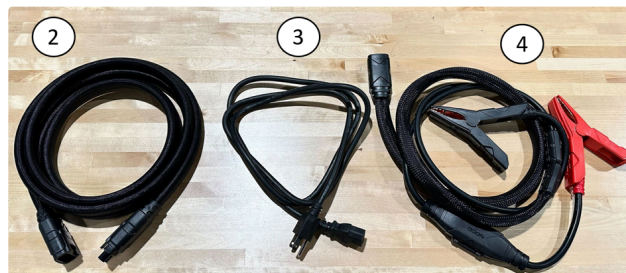
---

## Pre-requisites:

- R&I of the Front Cowl cover (to expose access to the 12V battery) - **FOR R1 ONLY**

## Layout of Genius PRO 50 12V Battery Charger:

1. NOCO Genius PRO 50 12V Battery Charger Main Module
2. Extension Cable
3. 110V Outlet power cable
4. Positive (RED) and Negative (Black) Charger leads



### Additional Special Tools Needed:

- **TSN01159-300-A Dual 12V Battery Support Cable** [TSN01159-300-B | Dual 12V Battery Support Cable](#) is to **ONLY** be used if supporting vehicles with dual 12V batteries , it is **NOT** needed for vehicles with single 12V battery configuration.

---

*Instructions in this procedure are based on single 12V battery configuration. When working on vehicles with dual 12V batteries you will need to use special tool **TSN01159-300-A Dual 12V battery support cable** Refer to: [TSN01159-300-B | Dual 12V Battery Support Cable](#) fo additional instructions on how to properly connect cables to the vehicle utilizing the special tool.*

## Tool Operation: 12V Support or Charging (In Vehicle)

### STEP 1: Connect Positive Clamp

Connect Positive clamp (RED) on the NOCO to the Pre-fuse box exposed lug for Single 12V battery vehicles.

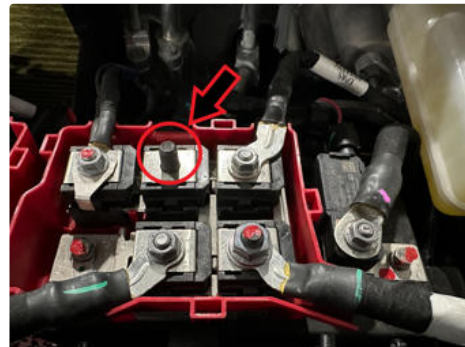


[For R1 and EDV vehicles with Dual 12V batteries: Refer to TUI for TSN01159-300 Dual 12V Battery Support Cable. This will allow you to connect the NOCO to both 12V batteries at the same time.](#)

R1:



Primary Pre-fuse (R1):



EDV:



Terminal located at Driver Side Towards Door Opening

## STEP 2: Connect Negative Clamp

Connect the Negative clamp (BLACK) to the frame of the vehicle.

**R1:** Attach to top of the strut mount stud

**EDV:** Attach to the door striker



Negative Clamp Attached to Strut Mount

**EDV:**



Negative Clamp Attached to Door Striker

---

### Step 3: Select NOCO Function

### Maintaining in Vehicle:

#### Maintaining in Vehicle:

Set the NOCO to “**12V SUPPLY**” using the **MODE** button (You will need to HOLD the MODE button to switch between modes)

This will maintain voltage and current to the 12V battery



### Charging in Vehicle:





## Charging in Vehicle:

Set the NOCO to “**12V AGM**” using the **MODE** button (You will need to HOLD the MODE button to switch between modes)

Select the **10A** charge feature. The down arrow will be illuminated.

When charging indicator is **GREEN**, it is complete and ready to be disconnected from vehicle

**⚠** Note: When charging a Battery, always have the 10 Amp feature selected. Charging at greater than 10 Amps can damage the battery



Note: When charging vehicles with dual 12V batteries using TSN01159-300, keep in mind that they will only receive 5A each and it may take quite a long time. **It may be quicker to just charge one 12V battery at a time!**

Refer to TUI : [TSN01159-300-B | Dual 12V Battery Support Cable](#) for setup of cables on Dual 12V battery vehicles.

#### STEP 4 : Disconnect HV Loop

Disconnect the HV Loop from the vehicle. This will pull support from the 12V Battery.

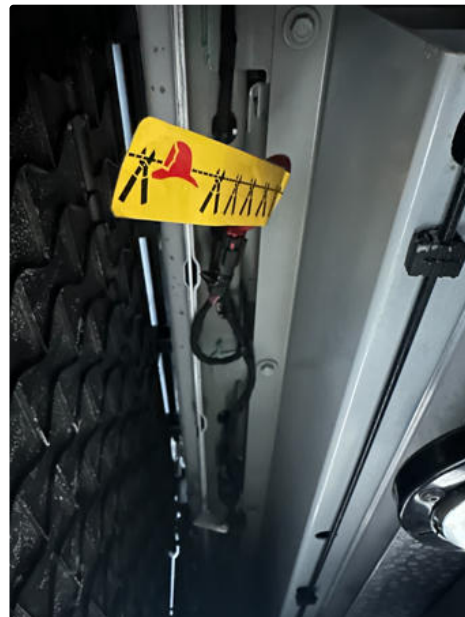
**For R1:** Located under cowl

R1:



EDV (either side of vehicle):

**For EDV:** Located on side panels of the vehicle (both sides)



---

### **STEP 5: Disconnect Tool & Reinstall HV Loop**

When you have completed 12V support, reconnect the HV loop on the vehicle.

---

**i** If **TSN01159-300** is used, be sure to disconnect it from the 12V batteries.

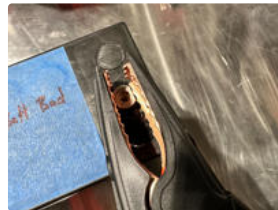
---

## Tool Operation: Charging the 12V Battery on a Bench

### STEP 1: Connect Battery Clamps

Connect Positive (**RED**) and Negative (**BLACK**) to the correct terminals of the 12V battery on the bench.

The terminal clamps are able to go direct and grip the small battery terminal posts. There is no need to use the battery terminal post extenders.



Reference this setup

**⚠ CAUTION:** Only charge one 12V battery at a time!

---

### STEP 2: Select NOCO Function

MODE: select **"12V AGM"**  
(You will need to HOLD the

MODE button to switch between modes)

Select the **10A** charge feature. The down arrow will be illuminated.

**⚠ Note:** When charging a Battery, always have the 10 Amp feature selected. Charging at greater than 10 Amps can damage the battery



### STEP 3: Charging Status

The Charge Status will start out Red. As the charger charges the battery, the indicator lights will progressively illuminate from red to orange to green.



#### STEP 4: Charging Complete

When it is completely done, the charger will switch to maintenance mode and the status indicator will go full GREEN

