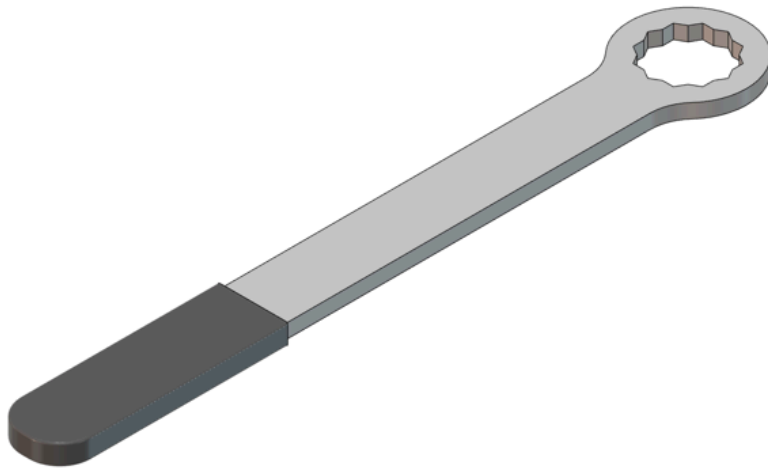


TSN01387-300: 31MM LOW PROFILE ALIGNMENT WRENCH

PURPOSE:

THE WRENCH IS USED TO ADJUST THE FRONT CAMBER AND CASTER ON MODEL YEAR 2026 EDV'S WITH LOW PROFILE CAM SLEEVES



LABOR CODE:

[981010019](#) Alignment, Four Wheel, Check and Adjust

OTHER TOOLS REQUIRED:



TSN00223-100-A: WRENCH,
RATCHET BOX-END, FLEX HEAD,
24MM



TSN00532-100-A: SOCKET,
SHALLOW, 1/2" 6PT. 24MM



TSN00060-100-A: RATCHET, 1/2"
DR, 24" FLEX HEAD



TSN00049-100-A: "1/2" DIGITAL
TORQUE WRENCH (33-338NM) :

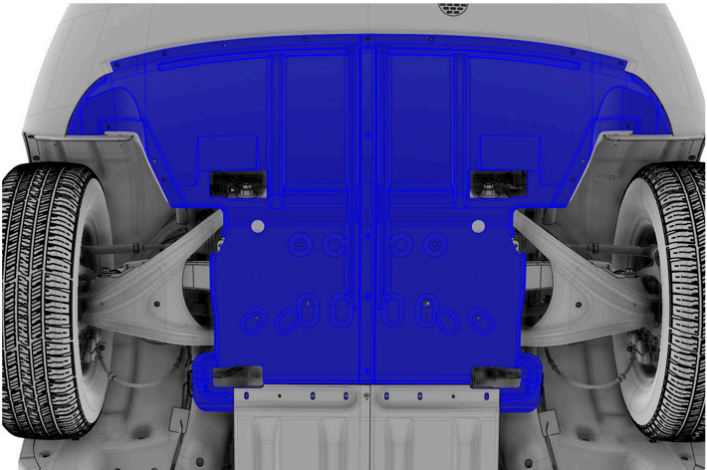
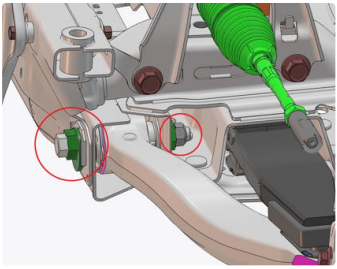
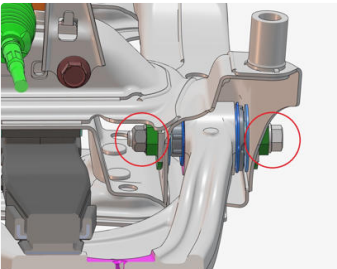
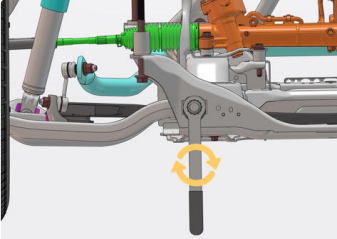
PRIOR TO USAGE:

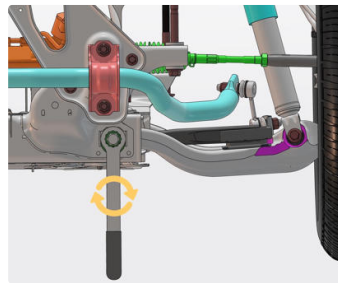
Visual Inspection and Preparation

1. Visually inspect for any damage and replace as necessary
2. Make sure vehicle is secure to the alignment rack before performing any adjustments

⚠ CAUTION: Do not perform procedure if any equipment is missing or damaged. Contact tooling team with any questions or requests for replacement parts. ServiceToolEngineering@rivian.com

TOOL USAGE:

STEP	DIRECTIONS	VISUAL AID - FRONT CASTER	VISUAL AID - FRONT CAMBER
1	Remove all underbody panels per service manual procedure.		
2	<p>Using a 24mm socket (TSN00532-100-A), 1/2" drive ratchet (TSN00060-100-A) and a 24mm ratcheting box end wrench (TSN00223-100-A), loosen the eccentric cam bolt.</p> <p>i Note: Loosen the front lower control eccentric bolt to adjust caster and the aft eccentric bolt to adjust camber.</p>	 <p>DRIVER'S SIDE SHOWN</p>	 <p>DRIVER'S SIDE SHOWN</p>
3	<p>Use the special 31mm low profile wrench (TSN01387-300-A) to rotate the eccentric bolt to the desired caster and camber angle.</p> <p>i Note: Always refer to the service manual procedure for alignment specifications.</p>	 <p>DRIVER'S SIDE SHOWN</p>	



DRIVER'S SIDE SHOWN

4 Using a 24mm socket (TSN00532-100-A), 1/2" drive torque wrench (TSN00049-100-A) and a 24mm ratcheting box end wrench (TSN00223-100-A), tighten and then torque the eccentric cam bolts to spec.

Note: Always refer to the service manual procedure for torque specifications.

5 Repeat steps 2-4 for passengers side caster and camber adjustments.

6. Reinstall all underbody panels per service manual procedure.