

# TSN01454-300-A : KINETIC FLUID DRAIN KIT

## PURPOSE:

ALLOWS DRAINING OF THE KINETIC RESERVOIR ON R1



## BILL OF MATERIALS

ITEM	QTY	DESCRIPTION	RIVIAN P/N	MFR/SUPPLIER	MFR P/N
1	1	KINETIC DRAIN ADAPTOR	TSN01428-300-A	MPCM	NCT21394083
2	1	FLEXIBLE SPOUT MEASURE: 2 QT/2 L. CAPACITY, HIGH DENSITY POLYETHYLENE	TSN01109-100-A	WESTWARD	2CAP1



## LABOR CODE:

187690024 HYDRAULIC DRAIN AND FILL

---

## OTHER TOOLS REQUIRED:

[TSN01443-300-A: APMU LINE RELEASE TOOL](#)



## PRIOR TO USAGE:

### **i** Visual Inspection

1. Visually inspect Y/32 coupler fitting end for damage
2. Inspect clear hose for holes or tears and replace as needed

**⚠ CAUTION:** Do not perform procedure if any equipment is missing or damaged. Contact tooling team with any questions or requests for replacement parts. [ServiceToolEngineering@rivian.com](mailto:ServiceToolEngineering@rivian.com)

---

## TOOL USAGE:

STEP	DIRECTIONS	VISUAL AID
1	<p>Disconnect the reservoir tank drain line from the back of the APMU using the approved AMPU Line Release special tool (TSN01443-300-A). Unclip the line anchor to give the drain line more slack to aid in the installation of the tool.</p> <p><a href="#">TSN01443-300-A: APMU LINE RELEASE TOOL</a></p>	



2

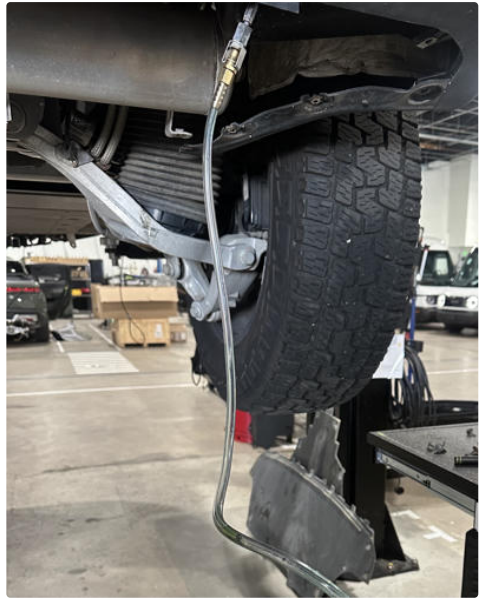
Connect the Kinetic Drain Adapter (TSN01428-300-A) to the drain line. Ensure the clips on both sides of the drain line engage with the male fitting on the adapter.





3

Run the hose down from the vehicle.



4

Route the drain adapter hose into the TSN01109-100-A measuring container.

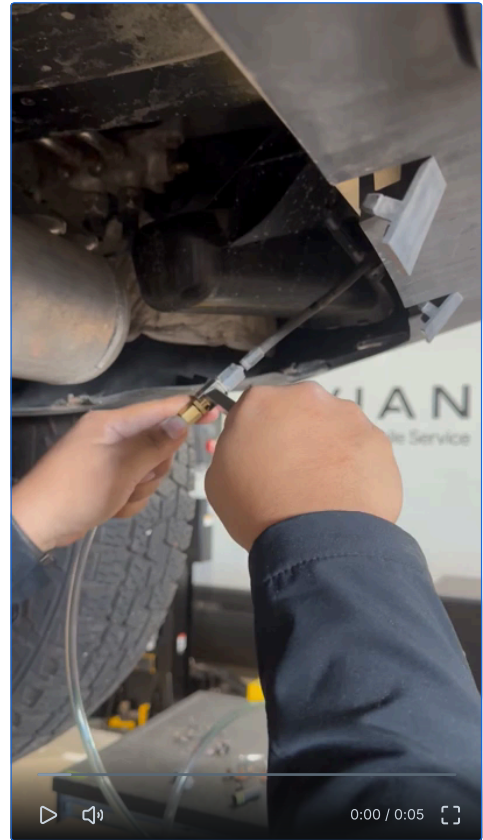
Ideally, place the drain container on top of a table or kinetic machine near the rear of the vehicle.



5

After performing the tank drain RiDE routine, use the AMPU Line Release special tool (TSN01443-300-A) to disconnect the adapter from the drain line.

**NOTE:** Using the AMPU Line Release special tool (TSN01443-300-A), push and then twist to fully release the clip and disconnect the adapter. See the AMPI Line Release Tool Use Instruction for more detail.



6

After disconnecting, route the drain line back around the reservoir tank and anchor the clip to the reservoir housing.



8.

Re-connect the drain line onto the rear of the APMU.

**⚠** It is **extremely important** that you reconnect the drain line back onto the rear of the APMU before you proceed with any other kinetic system procedures! This will prevent accidentally running the pump in the reservoir tank without a connection to the vehicle hard lines.

