

TOOL USE INSTRUCTION

RIVIAN

TOOL NUMBER TSN01474-300

TITLE COIL SPRING COMPRESSOR

REV - DATE REV 1 - 11/5/25

CONTENTS

[OVERVIEW](#)

[SAFETY](#)

[INITIAL SETUP](#)

[TOOL USE INSTRUCTION](#)

[MAINTENANCE & STORAGE](#)

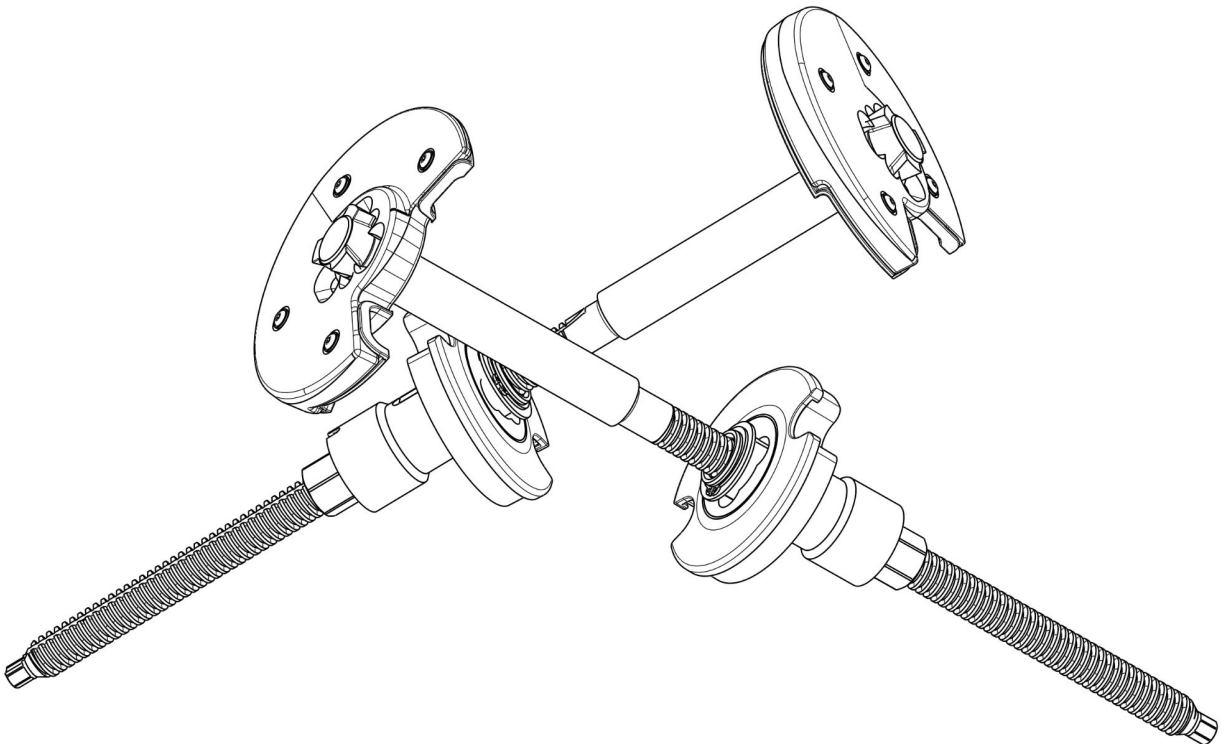
[SERVICE & REPLACEMENT PARTS](#)

[TROUBLESHOOTING](#)

[SYMBOL GLOSSARY](#)

TOOL FUNCTION

COMPRESS COIL SPRING ON MSP



11/5/25 REV 1

Printed or Downloaded Files are Uncontrolled, For Reference Only

OVERVIEW

SPECIFICATIONS

Weight:

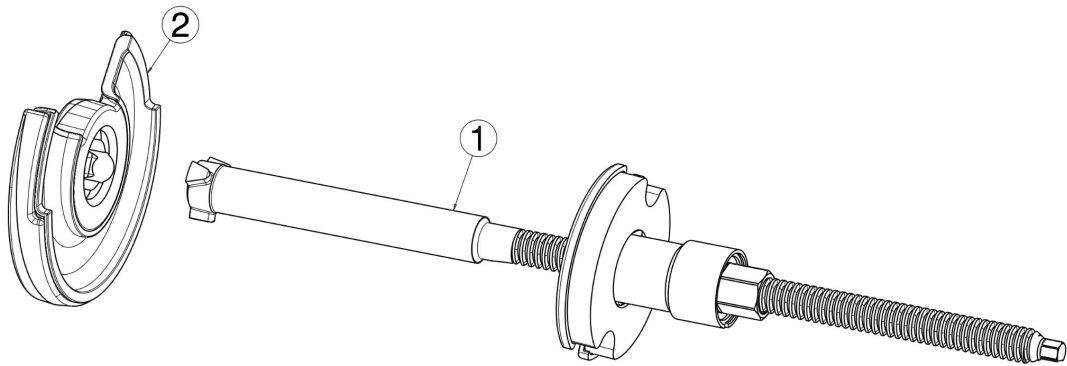
Overall Dimensions (WITH CASE): 483mm x 356mm x 159mm

LABOR CODES

TBD

OTHER TOOLS REQUIRED

TSN00225-100-B - FLEX HEAD RATCHET WRENCH, 22MM



COMPONENT GUIDE

ITEM	QTY	RIVIAN TOOL ID	DESCRIPTION
1	2	PT01654231-A	SPINDLE WITH HOUSING AND SUPPORT PLATE
2	2	PT01654230-A	PRESSURE PLATE WITH PROTECTIVE INSERT





WARNING

Do not perform procedure if tool is damaged or missing parts. Consult the Rivian Service Tool Catalog for replacement components.

Failure to follow guidelines outlined in this document could result in injury and/or property damage.

Spring Compressors have serious implications if used improperly

1. Perform a visual inspection of the integrity of the compressor before use.
2. Look for cracks, broken, or missing parts
3. Apply grease to the threads to prevent galling
4. **NEVER** use an impact tool with this Spring Compressor
5. Always stand to the side of the spring when using
6. Before releasing the suspension, ensure the compressor is locked in position

SAFETY GUIDELINES

1	<p>PPE REQUIRED</p> <ul style="list-style-type: none"> • eye protection • closed toe shoes • gloves • ear protection 	
2	<p>CAUTION</p> <p>Risk of Pinch Point</p> <ul style="list-style-type: none"> • keep hands and fingers clear of all moving parts. 	
3	<p>CAUTION</p> <p>Risk of</p> <ul style="list-style-type: none"> • damage to vehicle or property • voiding warranty 	
	<p>DANGER</p> <p>Risk of major injury such as</p> <ul style="list-style-type: none"> • crushing / maiming • death 	

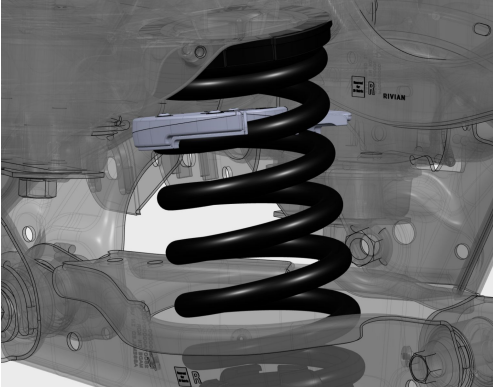
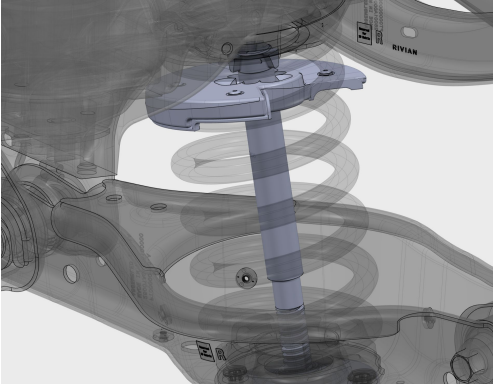
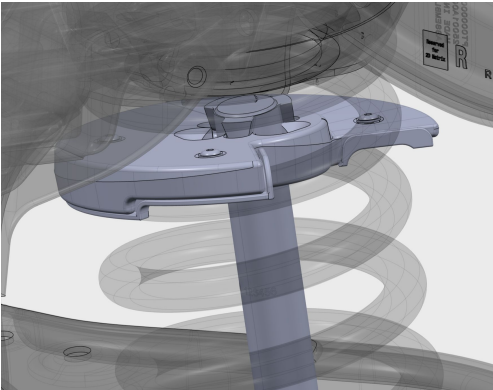
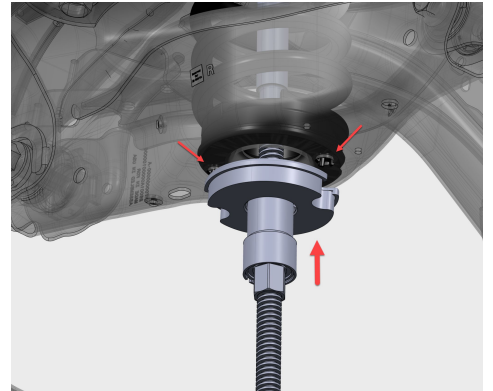


INITIAL SETUP

1	Raise and support vehicle according to Rivian Labor Code 981020017	
----------	--	--



TOOL USE INSTRUCTION

1	<p>Place the small plate into the upper area of the coil spring to be to be compressed.</p>	
2	<p>Take the assembled lower portion and insert it up through the control arm, passing through the upper plate.</p>	
3	<p>Once the 3 teeth are fully through, turn the lower spindle 60 degrees and bring it down to rest in the receiving pockets.</p>	
4	<p>Thread the barrel screw up the spindle until the lower plate is in full contact with the bottom of the control arm and there is no more slop in the tool and spring.</p> <p>Note - Position the lower plate with the cut-outs aligning with the isolator locating pins.</p>	

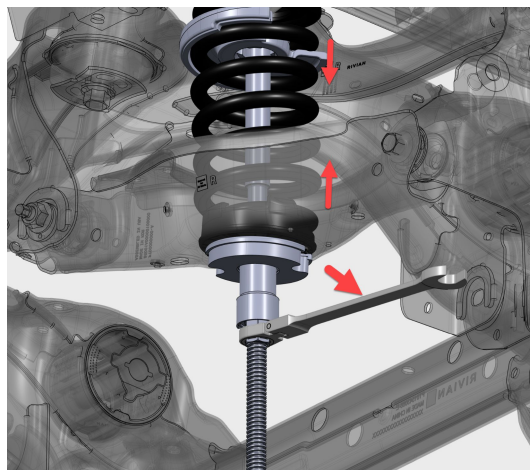


5

Important: Ensure the 3 locking teeth are fully engaged with the upper plate before compressing.

With the 22mm wrench, begin tightening the barrel screw until the spring is compressed to the desired height.

Note: NEVER use an impact tool with a Spring Compressor



MAINTENANCE & STORAGE

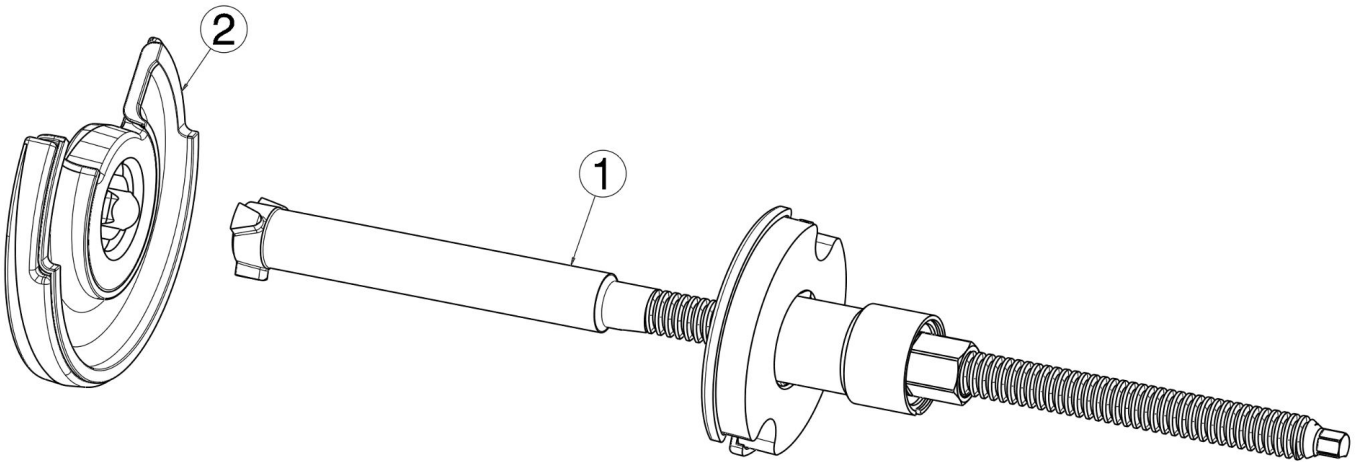
TASK	FREQUENCY
Inspect the tool for any defects or damage.	Before Each Use
Ensure there is a light layer of grease on the threads of the spindle.	Before Each Use
Wipe any dirt or debris from the tool and return all parts to the storage box.	After Each Use



SERVICE & REPLACEMENT COMPONENTS

FOR OTHER ITEMS NOT SHOWN, CONTACT RIVIAN SERVICE TOOL ENGINEERING

ITEM	DESCRIPTION	SUPPLIER + PART NUMBER
1	SPINDLE WITH HOUSING AND SUPPORT PLATE	GEDORE PN: KL-0016-60 RI
2	PRESSURE PLATE WITH PROTECTIVE INSERT	GEDORE PN: KL-0033-423 RI



TROUBLESHOOTING

PROBLEM	SOLUTION
Barrel nut is difficult to turn.	Check that the threads are lubricated, free of dirt and debris and not damaged.





DANGER

Risk of electrocution or electric shock



WARNING

Risk of minor injury



DANGER

Risk of major injury such as

- fire
- chemical or poison
- crushing / maiming
- death



CAUTION

Risk of

- damage to vehicle or property
- data disruption
- voiding warranty



CAUTION

Risk of Pinch Point

- keep hands and fingers clear of all moving parts.



PPE REQUIRED

IMPORTANT

Instructions to successfully complete a task

NOTE

Useful information

REVISION LOG

REV	DATE	CHANGE DESCRIPTION
1	11/05/2025	Initial release

