

TSN01524-300-A: SUPER POWER PUSHER

TRAINING VIDEO:

PURPOSE:

OTHER TOOLS REQUIRED:

PRIOR TO USAGE:

MAINTENANCE GUIDE:

MANUFACTURERS OWNERS MANUAL:

TOOL USAGE:

R1 - PUSHING FROM REAR

EDV - PUSHING FROM REAR

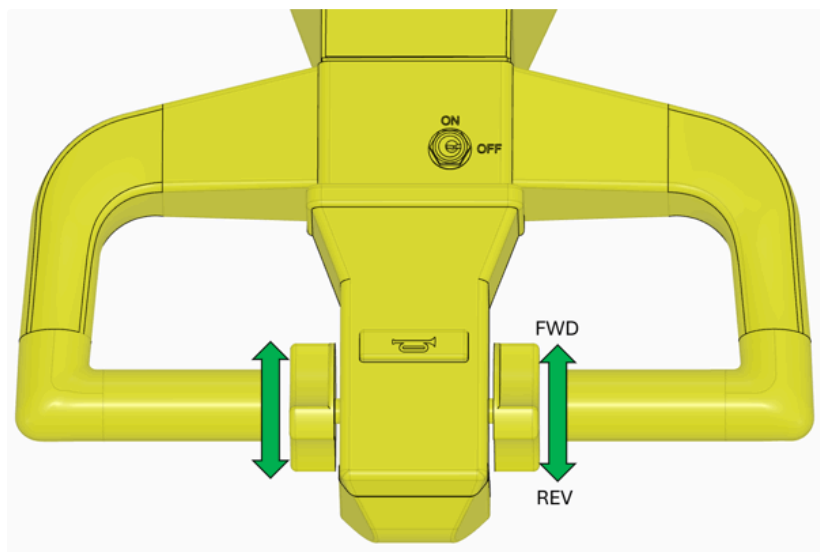
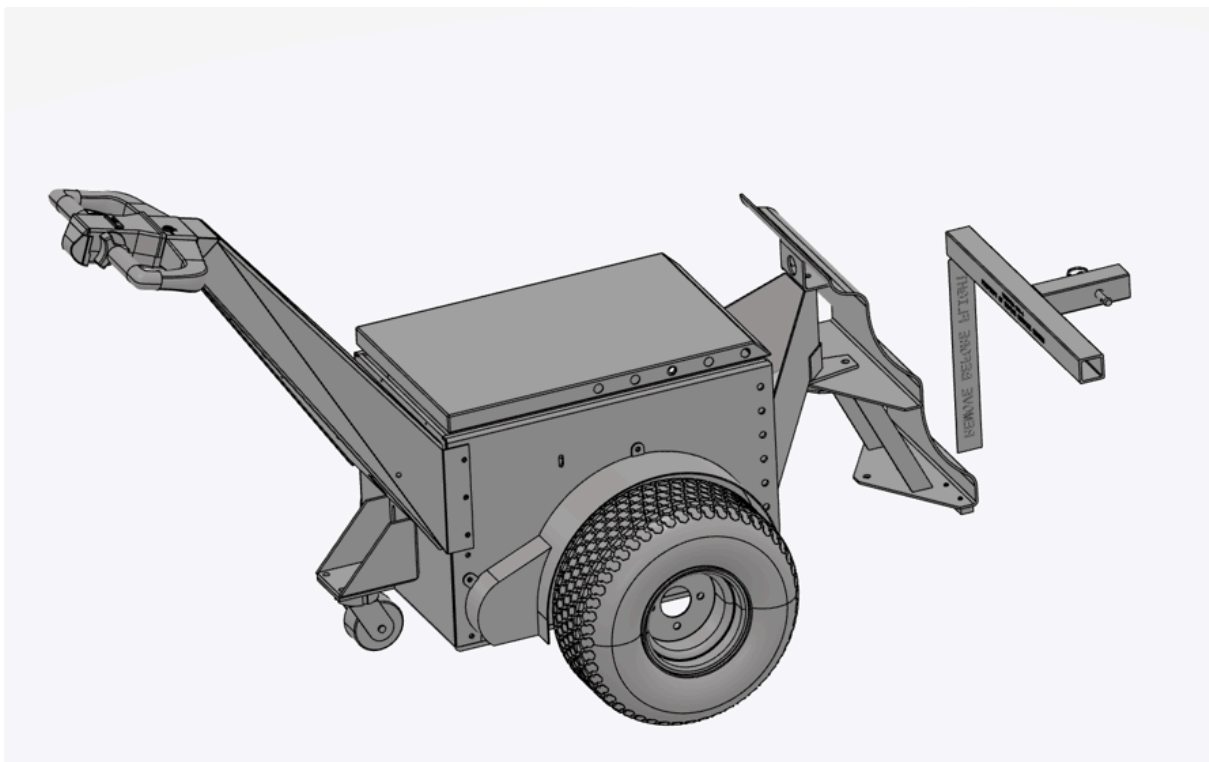
PULLING WITH A TOW STRAP

TRAINING VIDEO:

[TRAINING VIDEO LINK](#)

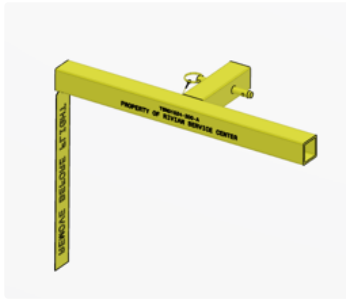
PURPOSE:

MOVE OFFLINE VEHICLES



OTHER TOOLS REQUIRED:

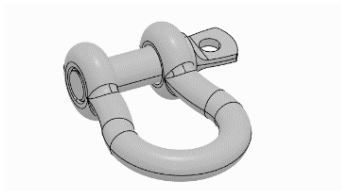
- TSN00547 - ELECTRONIC PARKING BRAKE RELEASE KIT
- TSN01524-200-A R1 PUSH BAR



- TSN00479 - TOW STRAP



- 7/8" SHACKLE, MCMASTER 3558T53:



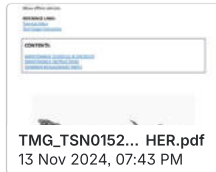
PRIOR TO USAGE:

- THE POWER PUSHER WILL WORK ON SLOPES OF UP TO 3.5 DEGREES
- THE VEHICLE MUST BE CAPABLE OF ROLLING. VEHICLE PUSHER DOES NOT LIFT AT THE AXLES.
- THIS PROCESS REQUIRES AT LEAST (2) PEOPLE, 1 TO OPERATE THE MACHINE AND ANOTHER TO CONTROL THE VEHICLE FROM THE DRIVERS SEAT
- ALWAYS CHECK THE EQUIPMENT FOR DAMAGE BEFORE OPERATION
- THE PUSHER MAY NOT WORK FOR WET AREAS, OR AREAS WITH COMPROMISED TRACTION



**CAUTION: Do not perform procedure if any equipment is missing or damaged.
Contact tooling team with any questions or requests for replacement parts.
ServiceToolEngineering@rivian.com**

MAINTENANCE GUIDE:



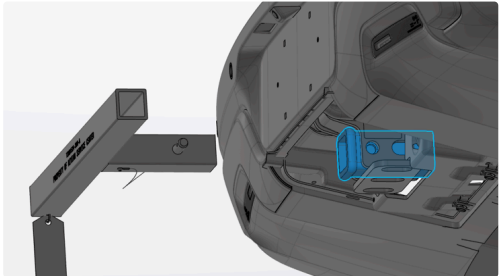
MANUFACTURERS OWNERS MANUAL:


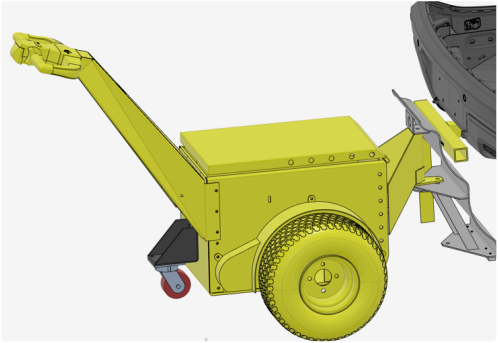


TOOL USAGE:

[TRAINING VIDEO LINK](#)




R1 - PUSHING FROM REAR

STEP	DIRECTIONS	VISUAL AID
1	Release the electronic parking brake through the infotainment screen or using the EPB release tool	
2	Insert the R1 Push Bar to the tow hitch. Attach the included hitch pin into the receiver.	

		
3	Have another person inside the vehicle to steer and apply the brakes as required.	
4	Bring the push pad of the power pusher towards the push bar. Use the upper half of the push pad against the push bar.	
5	Load the pusher upwards towards the push bar, and begin to push the vehicle.	
6	Modulate the throttle and adjust the positioning of the pusher as needed. The person inside the vehicle should steer and brake as needed.	

EDV - PUSHING FROM REAR

STEP	DIRECTIONS	VISUAL AID
1	Release the electronic parking brake through the infotainment screen or using the EPB release tool.	
2	Remove the yellow traction step on top of the bumper.	

		
3	Have another person inside the vehicle to steer and apply the brakes as required.	
4	Bring the push pad of the power pusher towards the rear bumper. Use the lower half of the push pad against the bumper.	
5	<p>Load the pusher upwards towards the bumper, and begin to push the vehicle.</p> <p>⚠ DO NOT PUSH ONTO THE PARKING SENSOR AREAS, KEEP THE PUSH PAD IN THE MIDDLE OF THE BUMPER</p>	 
6	<p>Modulate the throttle and adjust the positioning of the pusher as needed.</p> <p>The person inside the vehicle should steer and brake as needed.</p>	

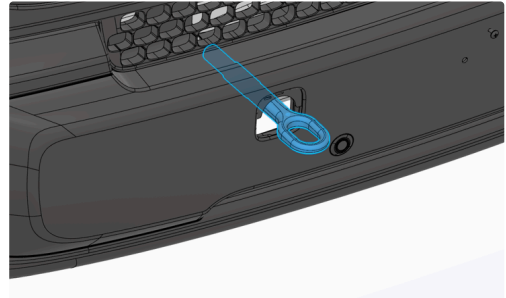
PULLING WITH A TOW STRAP

STEP	DIRECTIONS	VISUAL AID
1	<p>Attach the tow strap to the front of the vehicle.</p> <p>Use a “choke” method around the tow hook(s) and use the shackle to secure it.</p>	R1:

⚠ FOR EDV, LOCATE AND INSTALL THE FRONT TOW HOOK ATTACHMENT



EDV:



2

Attach the tow strap to the underside of the power pusher using the clevis pin.

Tilt the unit forward to gain better access to the underside.



3

Have another person inside the vehicle to steer and apply the brakes as required.

4

Carefully move the power pusher backwards, removing tension from the tow strap.

5

Continue to pull the vehicle, modulate the throttle and adjust the positioning of the tow strap as needed.

The person inside the vehicle should steer and brake as needed.

