

TOOL USE INSTRUCTION

RIVIAN

TOOL NUMBER TSN01560-300-A

TITLE R1 HUB BOLT - TORQUE KIT

REV - DATE REV A - 11/22/2024

CONTENTS

[OVERVIEW](#)

[SAFETY](#)

[INITIAL SETUP](#)

[TOOL USE INSTRUCTION](#)

[MAINTENANCE & STORAGE](#)

[SERVICE & REPLACEMENT PARTS](#)

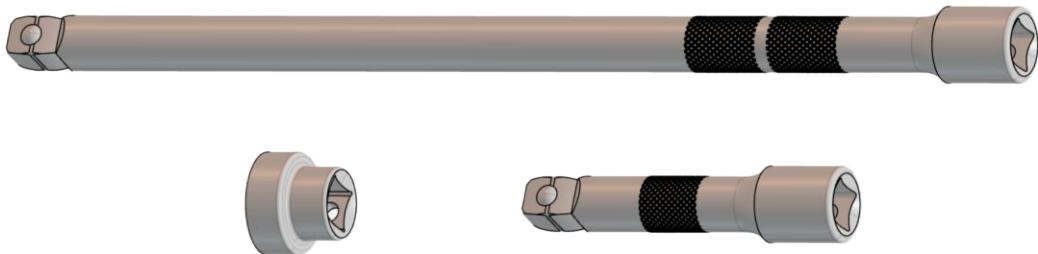
[TROUBLESHOOTING](#)

[SYMBOL GLOSSARY](#)

TOOL FUNCTION:

KIT USED TO TORQUE R1 HUB BOLTS WITH AXLES INSTALLED

REFERENCE: **RCA-18-24-001-1** TIGHTEN HUB TO KNUCKLE FASTENERS



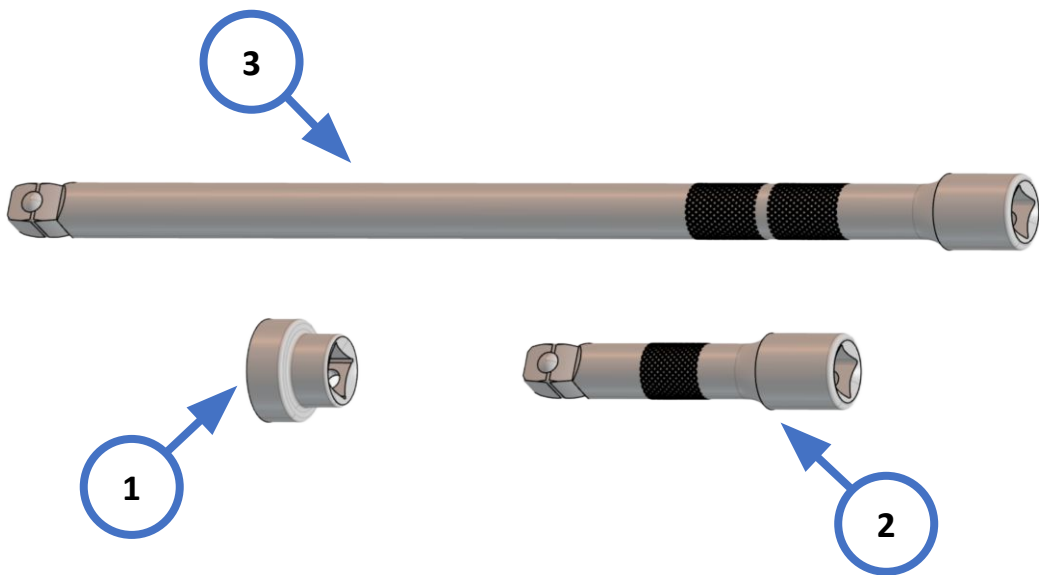
OVERVIEW

LABOR CODES

RCA-18-24-001-1: TIGHTEN HUB TO KNUCKLE FASTENERS

OTHER TOOLS REQUIRED

TSN00048-100-A - 3/8" DIGITAL TORQUE WRENCH



COMPONENT GUIDE

ITEM	QTY	RIVIAN TOOL ID	DESCRIPTION
1	1	TSN01556-300-A	LOW PROFILE R1 HUB SOCKET, 18MM
2	1	TSN01561-100-A	3/8" DR. WOBBLE EXTENSION, 3" LONG
3	1	TSN01562-100-A	3/8" DR. WOBBLE EXTENSION, 10" LONG





WARNING

Do not perform procedure if tool is damaged or missing parts. Consult the Rivian Service Tool Catalog for replacement components.

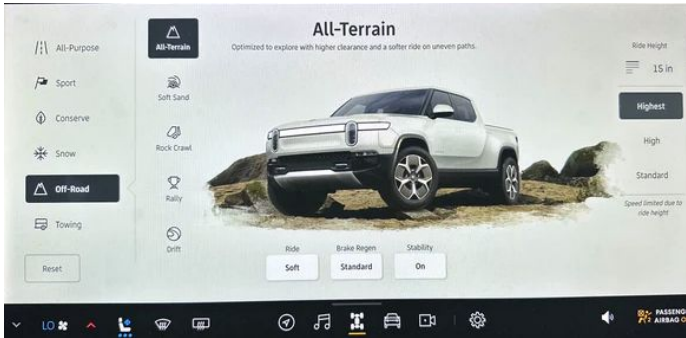
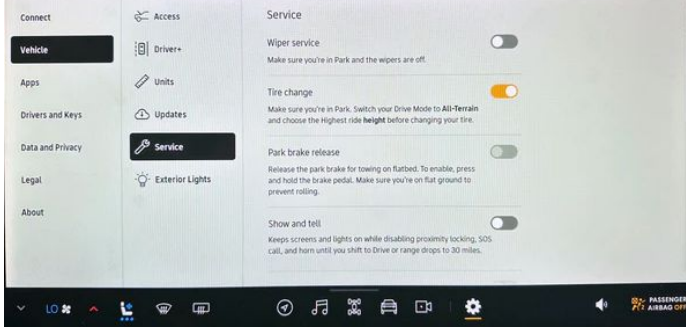
Failure to follow guidelines outlined in this document could result in injury and/or property damage.

SAFETY GUIDELINES

1	Use socket for specified RCA only.
2	If procedure is performed on the ground, ensure vehicle is on a flat surface with the parking brake engaged.
3	Ensure socket is fully seated on HUB bolt before torque is applied.
4	Be aware of potential pinch points between fingers and suspension components before torque is applied.



INITIAL SETUP

1	<p>From the center display, set vehicle to:</p> <ul style="list-style-type: none"> • OFF-ROAD mode • HIGHEST ride height 	
2	<p>From the center display, select:</p> <p>Vehicle -> Service -> Tire Change</p>	
3	<p>Remove lower undershields as needed to gain better access to the rear hub bolts</p>	



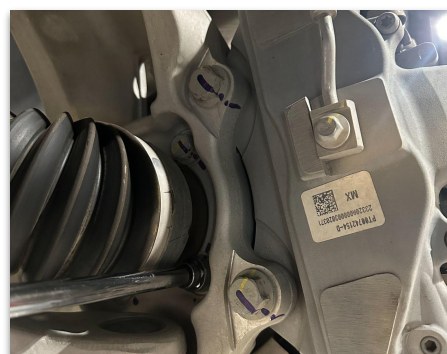
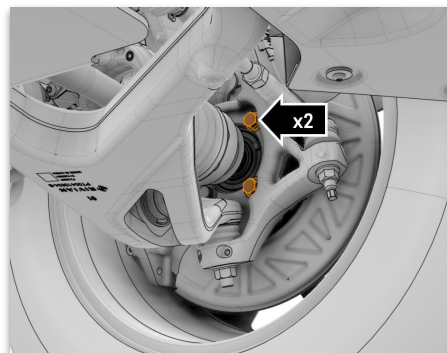
Turn front wheels all the way to the left to provide access to the 2x FWD hub bolts on the drivers side and 2x RR hub bolts on the passengers side.

Using the custom 18mm socket and a wobble extension (3" or 10"), torque the hub bolt to spec.

You can stack any standard extension after the wobble as needed to gain better leverage or clear suspension components.

IMPORTANT

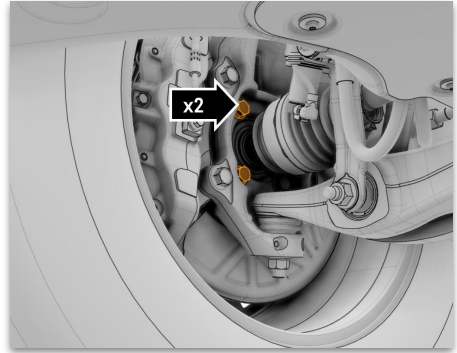
Refer to service manual procedure for torque values.



1

2

Turn front wheels all the way to the right to provide access to the 2x RR hub bolts on the drivers side and 2x FRT hub bolts on the passengers side and repeat torque procedure.



3

Moving to the rear axle, use the custom 18mm socket and a wobble extension (3" or 10"), torque the hub bolt to spec.

Repeat procedure for both driver and passengers side.

IMPORTANT

Refer to service manual procedure for torque values.



MAINTENANCE & STORAGE

TASK	FREQUENCY
Inspect socket for signs of damage or wear. Replace as needed.	Before Each Use
Put tools back in provided tool case to ensure all components are accounted for and available for the next technician to use.	After each use
Ensure tool is free of moisture and/or chemicals prior to storage.	After each use

NOTE

***Tools are distributed by Rivian Service Tooling Team to perform
RCA-18-24-001-1***

***For replacement parts, contact
ServiceToolEngineering@rivian.com***





WARNING

Risk of minor injury

REVISION LOG

REV	DATE	CHANGE DESCRIPTION
A	11/08/2024	Initial release

