

# TOOL USE INSTRUCTION

**RIVIAN**

TOOL NUMBER

TSN01679-300

TITLE

UNIVERSAL TING WASHER INSTALLATION KIT

REV - DATE

REV 1 - 02/11/2026

## CONTENTS

[OVERVIEW](#)

[SAFETY](#)

[INITIAL SETUP](#)

[TOOL USE INSTRUCTION](#)

[MAINTENANCE & STORAGE](#)

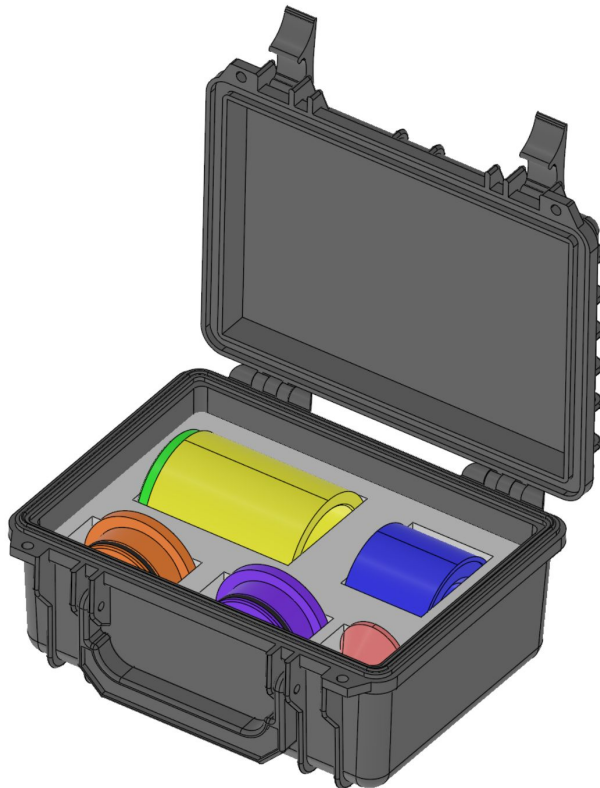
[SPARE PARTS](#)

[TROUBLESHOOTING](#)

[SYMBOL GLOSSARY](#)

## TOOL FUNCTION

UNIVERSAL KIT USED TO INSTALL TING WASHERS ON ORIGIN, ENDURO AND MAXIMUS AXLES.



**WARNING**

Do not perform procedure if tool is damaged or missing parts. Consult the Rivian Service Tool Catalog for replacement components.

Failure to follow guidelines outlined in this document could result in injury and/or property damage.

**SAFETY GUIDELINES**

1	Risk of <ul style="list-style-type: none"> <li>• damage to vehicle or property</li> </ul>	
2	Risk of Pinch Point <ul style="list-style-type: none"> <li>• Be careful when using dead-blow mallet</li> </ul>	



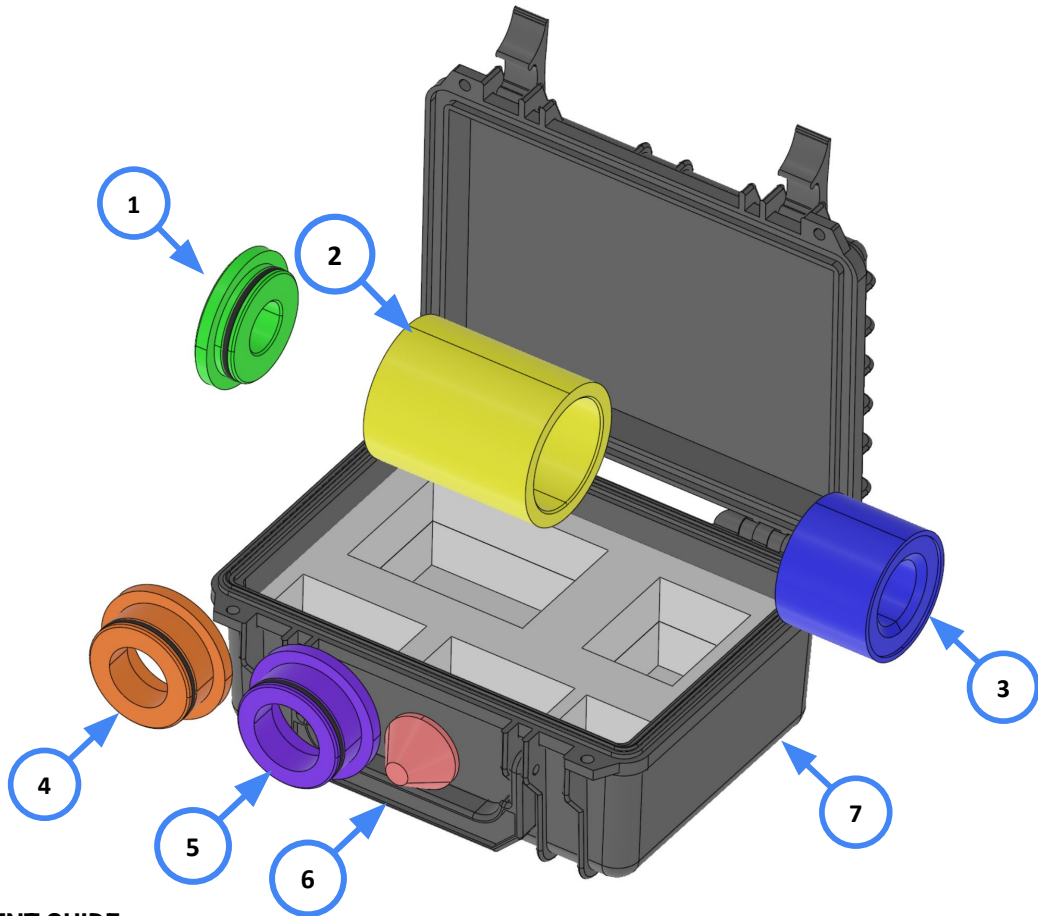
**SPECIFICATIONS**

WEIGHT: 1.9KG

OVERALL DIMENSIONS: 104.2MM X 181.5MM X 233.3MM

**ADDITIONAL TOOLS REQUIRED**

TSN00273-100-A: HAMMER, DEAD BLOW, 48OZ



**COMPONENT GUIDE**

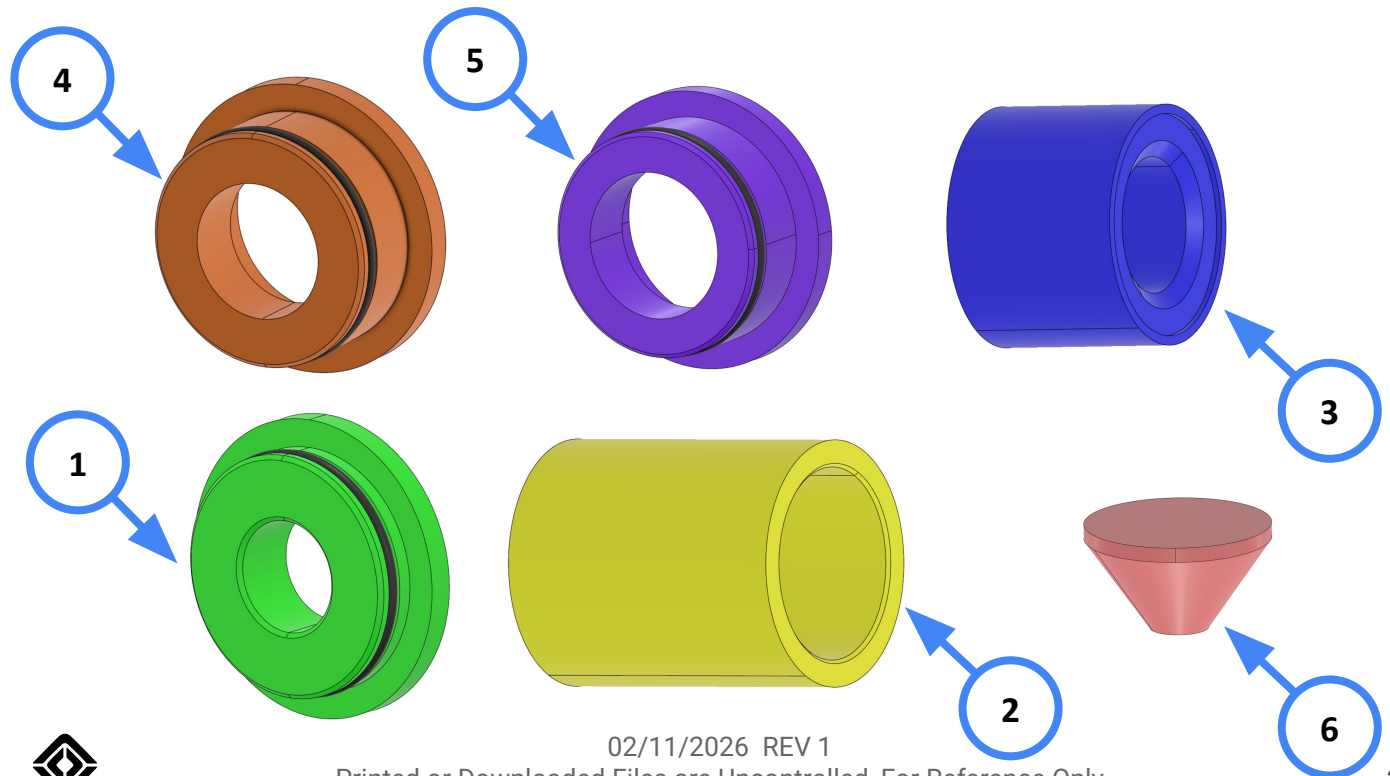
ITEM	QTY	RIVIAN TOOL ID	DESCRIPTION
1	1	TSN01679-201-A	INSTALL SLEEVE BACK PLATE
2	1	TSN01679-200-A	INSTALL SLEEVE
3	1	TSN01679-202-A	PREBEND BUSHING
4	1	TSN01679-204-A	31MM INSTALL BUSHING
5	8	TSN01679-205-A	35MM INSTALL BUSHING
6	2	TSN01679-203-A	PREBEND CONE
7	1	TSN01679-200-A	STORAGE CASE



**TOOL APPLICABILITY**

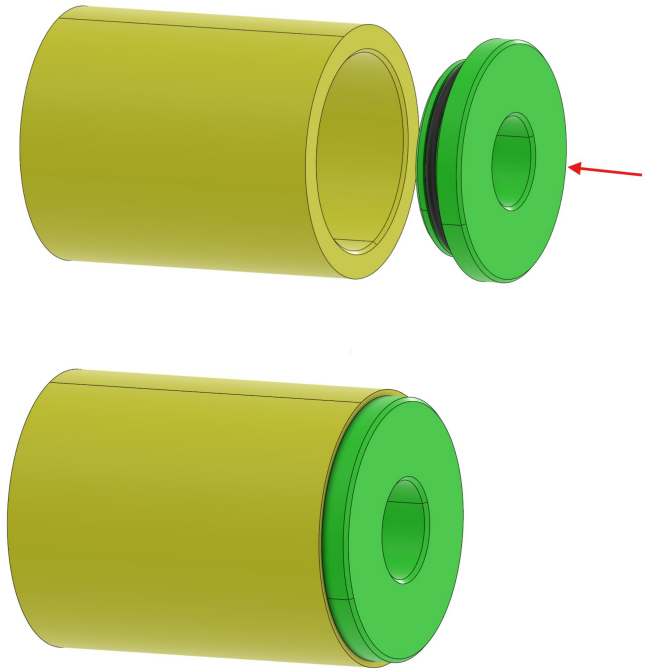
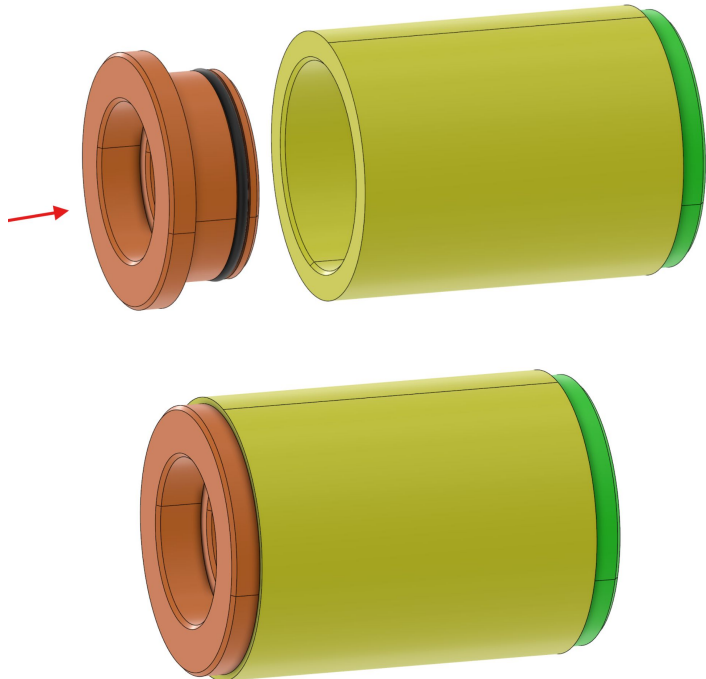
**TSN01679-300**

ITEM	DESCRIPTION	TOOL INDICATOR	PART NUMBER	COMPATIBLE WITH
1	INSTALL SLEEVE BACK PLATE	A	TSN01679-201-A	ALL
2	INSTALL SLEEVE	B	TSN01679-200-A	ALL
3	PREBEND BUSHING	C	TSN01679-202-A	ORIGIN FRONT/REAR TING WASHERS
4	31MM INSTALL BUSHING	D	TSN01679-204-A	FRONT AXLES AND TING WASHERS
5	35MM INSTALL BUSHING	E	TSN01679-205-A	REAR AXLES AND TING WASHERS
6	PREBEND CONE	F	TSN01679-203-A	ORIGIN FRONT/REAR TING WASHERS



02/11/2026 REV 1

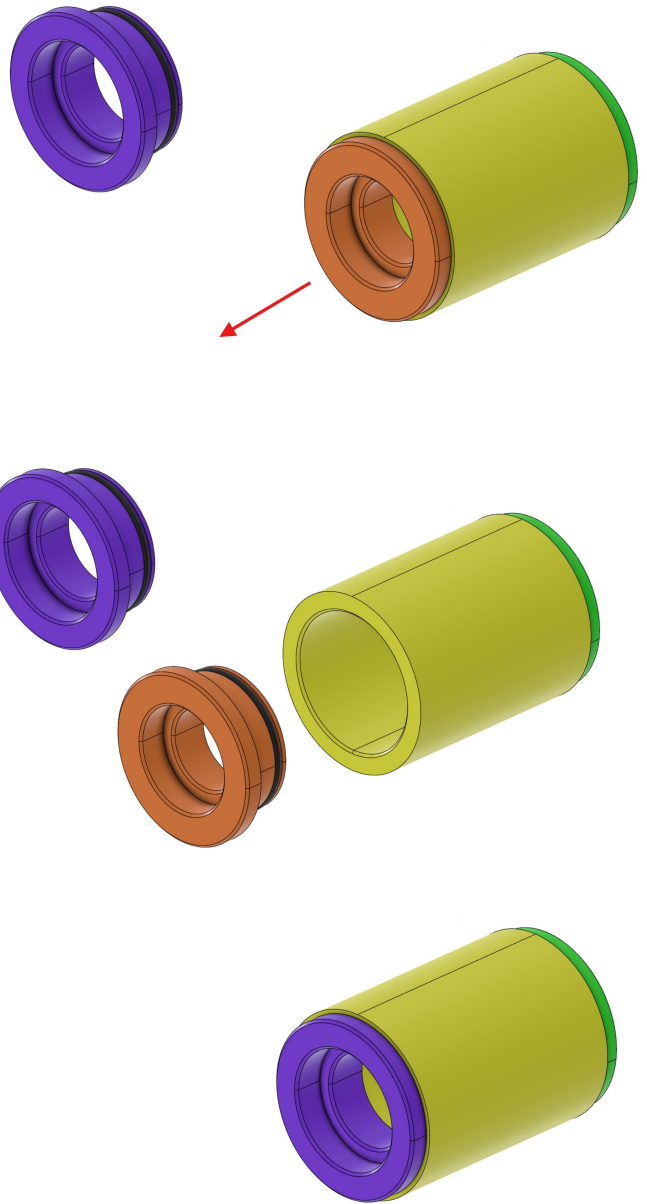
Printed or Downloaded Files are Uncontrolled, For Reference Only

<p>1</p>	<p>First, attach Install Sleeve Back Plate (A) to Install Sleeve (B) as shown.</p>	
<p>2</p>	<p>Attach 31MM (D) or 35MM (E) Install Bushing on the other end of Install Sleeve (B)</p>	



3

To change drivers, detach the active driver and attach the desired driver.

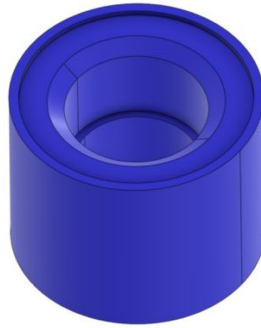


4

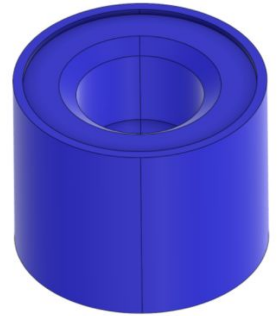
If installing an Origin ting washer, ensure that it's pre-bent prior to install.

Insert ting washer into Prebend Bushing (C) until it seats.

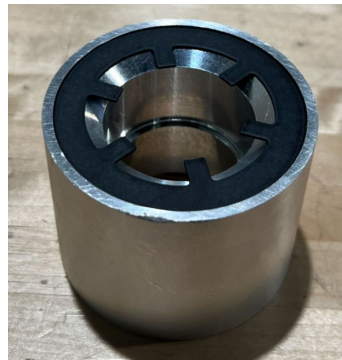
Next, take Prebend cone (F) and squeeze using hand force until it can no longer travel into Prebend Bushing (C)



**Origin Rear  
Ting Washer  
Pre-bend Side**

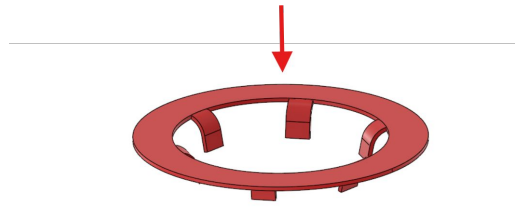


**Origin Front  
Ting Washer  
Pre-bend Side**



1

Verify that the correct driver and ting washer is being used, then insert ting washer into Install Bushing as shown.

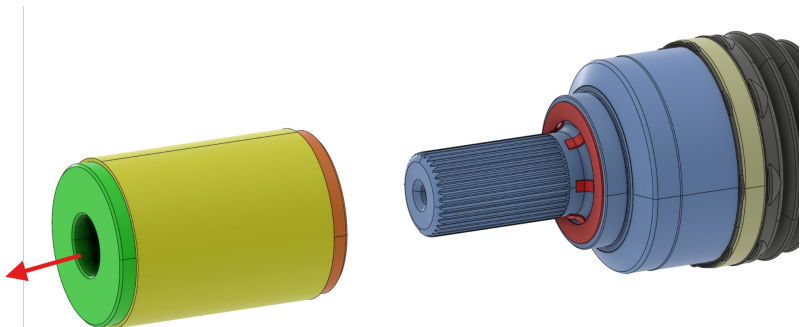
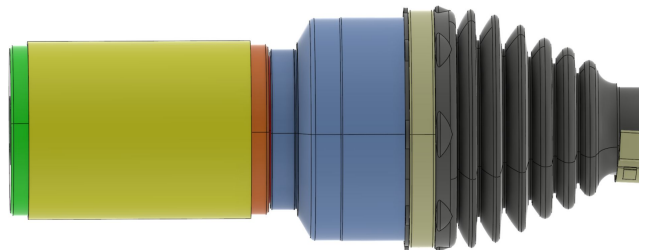


2

Line everything up, then with hand force, slide timing washer onto axle until it can no longer travel.

After installing, remove the tool from axle.

If unable to assemble using hand force, apply force on Install Sleeve Back Plate using a dead blow mallet.

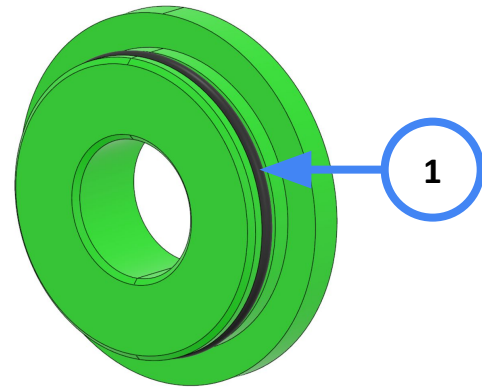
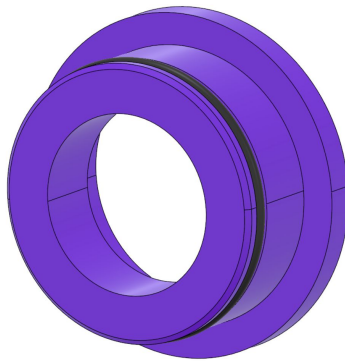
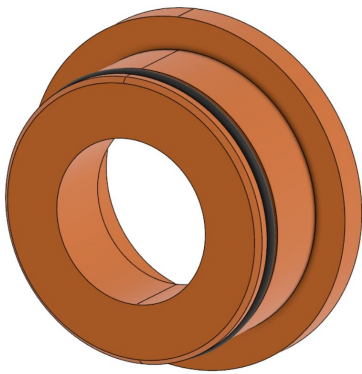


<b>TASK</b>	<b>FREQUENCY</b>
Inspect items in kit for wear, scratches, or nicks	Before Each Use
Return kit to its storage location	After Each Use



FOR OTHER ITEMS NOT SHOWN, CONTACT RIVIAN SERVICE TOOL ENGINEERING

ITEM	DESCRIPTION	SUPPLIER + PART NUMBER	PHOTO
1	O-RING, 131 DASH SIZE	MCMASTER-CARR PN - 9452K136	



PROBLEM	SOLUTION
Ting washer isn't fully seated to axle	<ul style="list-style-type: none"><li>● Check that ting washer isn't loose</li><li>● For Enduro, ensure that ting washer tabs are over the lip on the axle</li></ul>
Excessive resistance is felt when installing ting washer	<ul style="list-style-type: none"><li>● Verify that ting washer and axle combination is correct</li><li>● Use a dead-blow hammer to install rather than hand force</li><li>● For Origin, partially install it by hand, then use the tool to completely install it</li><li>● For Origin, visually inspect tabs to ensure that ting washer was sufficiently bent</li></ul>



**CAUTION**

Risk of

- damage to vehicle or property

**CAUTION**

Risk of Pinch Point

REV	DATE	CHANGE DESCRIPTION
1	02/11/2026	Initial release

