

TOOL USE INSTRUCTION

| | | |
|---------------|-------------|------------------------------|
| RIVIAN | TOOL NUMBER | TSN01692-300 |
| | TITLE | REAR SUBFRAME GUIDE PIN - R2 |
| | REV - DATE | REV 1 - 5/13/2026 |

CONTENTS

[OVERVIEW](#)

[SAFETY](#)

[INITIAL SETUP](#)

[TOOL USE INSTRUCTION](#)

[MAINTENANCE & STORAGE](#)

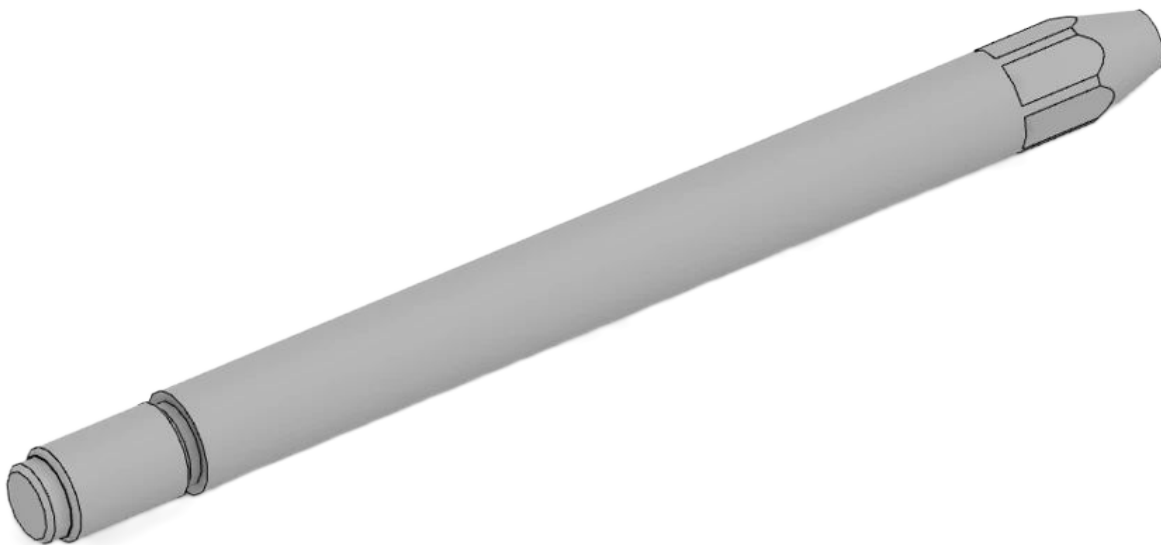
[TROUBLESHOOTING](#)

[SYMBOL GLOSSARY](#)

TOOL FUNCTION

USED TO PRE-ALIGN THE REAR SUBFRAME TO THE BODY DURING INSTALLATION ON R2 VEHICLES (QTY 2 REQUIRED).

NOTE: PINS ARE OPTIONAL AND INTENDED TO FOR PRE-ALIGNMENT OF THE SUBFRAME ONLY. FOR FINAL ALIGNMENT OF THE SUBFRAME, TSN01755-300-A REAR SUBFRAME LOCATING JIG - R2 IS REQUIRED



OVERVIEW

SPECIFICATIONS

Weight: 0.369Kg

Overall Dimensions: 17.5mm dia. x 208mm

LABOR CODES

4655 - SUBFRAMES (ALL SUB LABOR CODES)

OTHER TOOLS REQUIRED

TSN01755-300-A REAR SUBFRAME LOCATING JIG - R2

TSN01368-100-A FLEX HEAD RATCHETING WRENCH, 16MM

TSN00113-100-A SKT, 3/8" DR, SHALLOW, 16MM

TSN00058-100-A RATCHET, 3/8" DR, FLEX HEAD, 10-5/16"

TSN00048-100-A 3/8" DIGITAL TORQUE WRENCH (TORQUE + ANGLE) 6.7-169Nm





WARNING

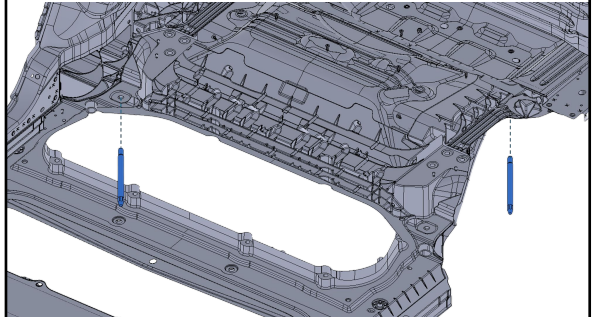
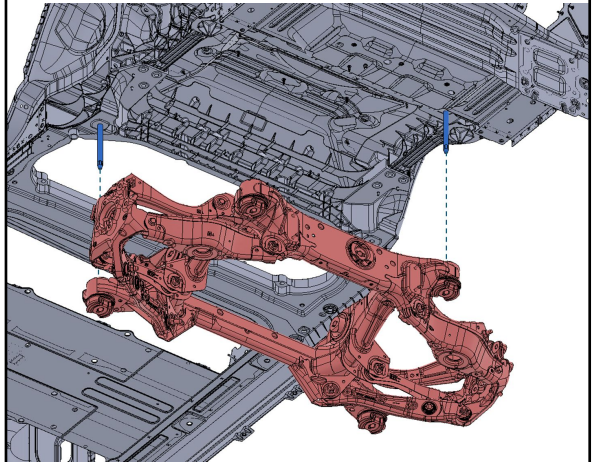
Do not perform procedure if tool is damaged or missing parts. Consult the Rivian Service Tool Catalog for replacement components.

Failure to follow guidelines outlined in this document could result in injury and/or property damage.

SAFETY GUIDELINES

| | | |
|-----------------|--|--|
| <p>1</p> | <p>Risk of damage to vehicle or property</p> <ul style="list-style-type: none"> • always use a spotter when installing subframes to ensure coolant lines and electrical harnesses are clear | |
| <p>2</p> | <p>Risk of Pinch Point</p> <ul style="list-style-type: none"> • keep hands and fingers clear of all moving parts. | |
| <p>3</p> | <p>PPE REQUIRED</p> <ul style="list-style-type: none"> • eye protection • closed toe shoes • gloves | |



| | | |
|----------|--|--|
| <p>1</p> | <p>Install alignment pins to skateboard front subframe mount points in locations shown (opposite corners). Tighten until fully seated and snug, do not exceed 50 Nm</p> <p>IMPORTANT</p> <p>Pins are intended to for pre-alignment of the subframe only. For final alignment of the subframe, TSN01755-300-A REAR SUBFRAME LOCATING JIG - R2 is required.</p> <p>Failure to precisely align the subframe using the correct tooling can result in difficulty performing a 4 wheel alignment and/or contact between the rear subframe and HV battery.</p> |  |
| <p>2</p> | <p>Lift subframe until nearly engaged with alignment pins and pause.</p> <p>Re-position lift as needed to align subframe clearance holes with alignment pins.</p> <p>Refer to tool use instruction for TSN01755-300-A to complete install procedure.</p> |  |



BASIC MAINTENANCE GUIDE

| TASK | FREQUENCY |
|---|---------------------------|
| Visually inspect alignment pins for dirt/debris. Inspect threads for damage. | Before Each Use |
| Wipe away excess dirt and debris using a clean shop rag. | Before and After Each Use |
| Place back on magnetic tray on Subframe Fixture. | After Each Use |



TROUBLESHOOTING

| PROBLEM | SOLUTION |
|--|--|
| REAR SUBFRAME ALIGNMENT PIN - R2 is bent or damaged. | Replace REAR SUBFRAME ALIGNMENT PIN - R2 |
| Unable to complete 4 wheel alignment within spec. | Subframe installation alignment must be completed with TSN01755-300-A to ensure camber and caster can be adjusted within spec without running out of travel on the eccentric bolts |





DANGER

Risk of electrocution or electric shock



WARNING

Risk of minor injury



DANGER

Risk of major injury such as

- fire
- chemical or poison
- crushing / maiming
- death



CAUTION

Risk of

- damage to vehicle or property
- data disruption
- voiding warranty



CAUTION

Risk of Pinch Point

- keep hands and fingers clear of all moving parts.



PPE REQUIRED

IMPORTANT

Instructions to successfully complete a task

NOTE

Useful information

REVISION LOG

| REV | DATE | CHANGE DESCRIPTION |
|-----|-----------|--------------------|
| 1 | 5/13/2026 | Initial Release |
| | | |

