

TOOL USE INSTRUCTION

RIVIAN	TOOL NUMBER	TSN01742-300
	TITLE	R2 SPARE TIRE - TORQUE ADAPTER
	REV - DATE	REV 1 - 03/18/26

CONTENTS

[OVERVIEW](#)

[SAFETY](#)

[INITIAL SETUP](#)

[TOOL USE INSTRUCTION](#)

[MAINTENANCE & STORAGE](#)

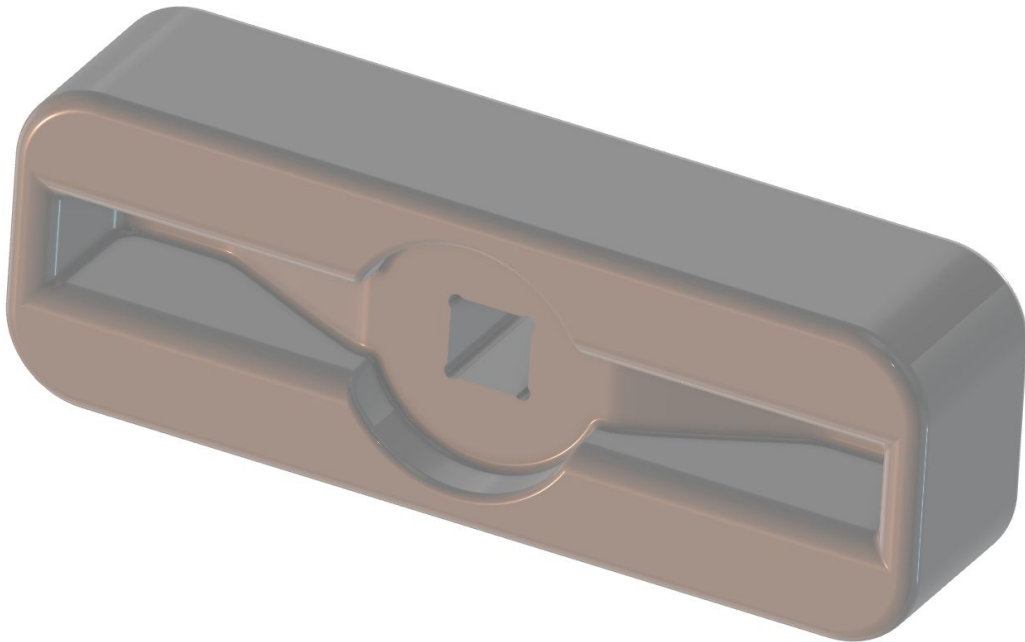
[SPARE PARTS](#)

[TROUBLESHOOTING](#)

[SYMBOL GLOSSARY](#)

TOOL FUNCTION

USED TO TORQUE R2 SPARE TIRE WING NUT





WARNING

Do not perform procedure if tool is damaged or missing parts. Consult the Rivian Service Tool Catalog for replacement components.

Failure to follow guidelines outlined in this document could result in injury and/or property damage.

SAFETY GUIDELINES

1	<p>WARNING</p> <p>Risk of minor injury</p>	
2	<p>CAUTION</p> <p>Risk of</p> <ul style="list-style-type: none"> • damage to vehicle or property 	
3	<p>CAUTION</p> <p>Risk of Pinch Point</p> <ul style="list-style-type: none"> • keep hands and fingers clear of all moving parts. 	



SPECIFICATIONS

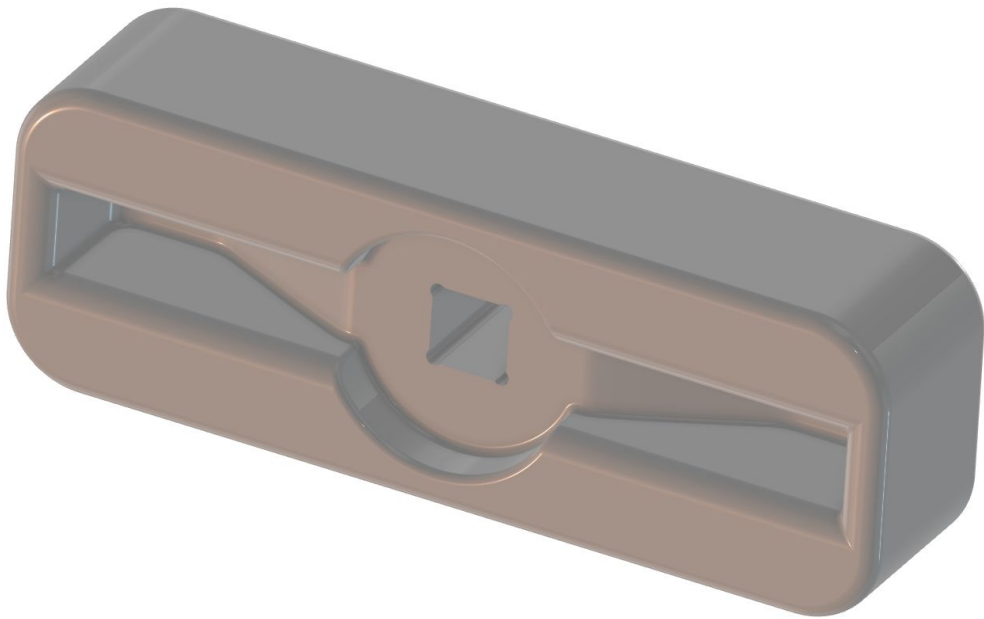
Overall Dimensions: 110mm x 38mm x 25 mm

LABOR CODES

968275018: Wheel and Tire Assembly, Spare (Retrofit)


OTHER TOOLS REQUIRED

TSN00047-100-B: ¼" DIGITAL TORQUE WRENCH (1.7-27Nm)


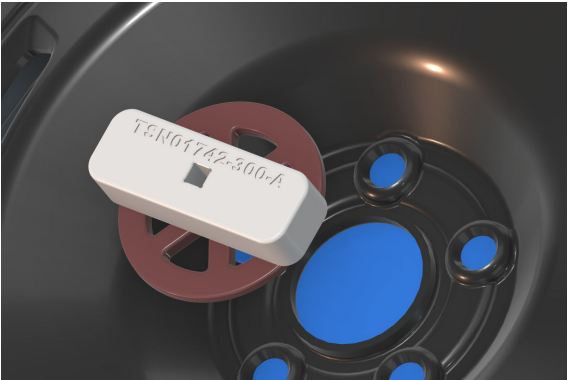
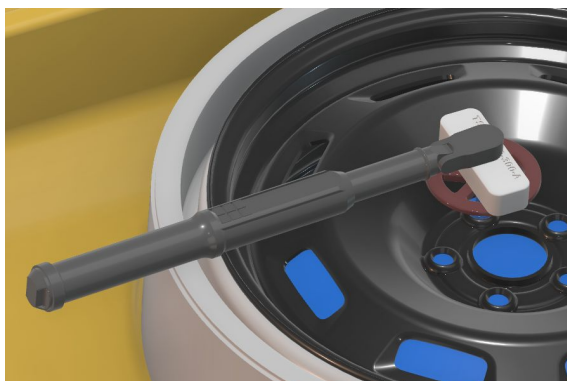
**TOOL REVISION GUIDE**

RIVIAN TOOL ID	REVISION	NOTES
TSN01742-300-A	A	INITIAL LAUNCH
TSN01742-300-B	B	CHANGES SQUARE DRIVE FROM ⅜" TO ¼" TO ALIGN UPDATED TORQUE SPECIFICATION



1	<p>Install spare tire and related components into vehicle.</p> <p>Start spare tire fastener by hand, but do not tighten.</p>	
---	--	--



<p>1</p>		
<p>2</p>	<p>Place torque adapter over the flanges of the spare tire fastener.</p>	
<p>3</p>	<p>Torque fastener to spec. Refer to the service manual for proper torque spec.</p>	
<p>4</p>	<p>IMPORTANT</p> <ul style="list-style-type: none"> Under torque of fastener can lead to NVH complaints. Overtorque can cause failure of fastener or damage to vehicle body. 	



BASIC MAINTENANCE GUIDE

TASK	FREQUENCY
Inspect tool for damage or wear. Replace tool if square drive is damaged.	Before Each Use
Return to designated storage location.	After Each Use





DANGER

Risk of electrocution or electric shock



WARNING

Risk of minor injury



DANGER

Risk of major injury such as

- fire
- chemical or poison
- crushing / maiming
- death



CAUTION

Risk of

- damage to vehicle or property
- data disruption
- voiding warranty



CAUTION

Risk of Pinch Point

- keep hands and fingers clear of all moving parts.



PPE REQUIRED

IMPORTANT

Instructions to successfully complete a task

NOTE

Useful information

REV	DATE	CHANGE DESCRIPTION
1	03/18/2024	Initial release

