	<b>TOOL USE INSTRUCTION</b>	
	<b>Tool Number: NCT04760763</b>	<b>REV: 1.0</b>
	<b>Title: Torque Head, 21mm</b>	<b>DEPT: Service Engineering</b>

<b>Author</b>	Peter Langel	<b>Approver(s)</b>	
---------------	--------------	--------------------	--

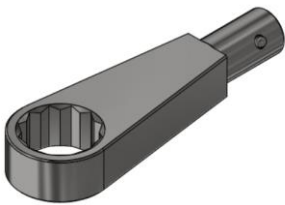
**Revision Log:**

REV	Revision Description (Reason for Change)	Author	Rev. Date
1.0	INITIAL RELEASE	P.Langel	5/1/2021

**Reference**

981010019 Alignment, Four Wheel, Check and Adjust

**PURPOSE:** The purpose of this tool is to facilitate torquing of the R1T and R1S **Rear Camber Nut**



**GENERAL PRINCIPLES**

1. Inspect the tool prior to use and verify that it is free of damage

**TOOLS USED IN CONJUNCTION WITH THIS TOOL**

1. TORQUE WRENCH BODY, 40-200 Nm QD3IN200B



**USING THE TOOL:**

1. Install or remove the the head from to the Torque Wrench Body by depressing the detent pin.
2. When alignment is within specification, first snug the camber nut using a wrench.
3. Torque the nut per Service Manual specification using **NCT04760763**



## TOOL USE INSTRUCTION

**Tool Number:** NCT04760763

**REV:** 1.0

**Title:** Torque Head, 21mm

**DEPT:** Service Engineering



- **NOTE:** Access to the Nut is very tight and may require flipping the wrench. The torque wrench body is capable of torquing in both directions
4. When you have finished, return the torque wrench to it's lowest setting and store it.
  5. End Instruction